



Pride
Foundation

Thank you

2014–2015 Gratitude Report



Be who you are,
where you are...

Alaska

Chilkat Mountains
Haines Borough, Alaska



Letter from Leadership	2
Pride Foundation: 30 Years of Inspiring Hope	4
What We Do	8
Building Organizations	12
Supporting Students	15
Connecting Leaders	18
Grantees	22
Our Donors	24
Fund Creators	35
Visionaries	36
Volunteers	38
Organizational Support	41
Scholars	43
Financials	45



Seth Kirby
Board President



Kris Hermanns
Executive Director

Thank you.

As Pride Foundation celebrates our 30th anniversary, we want to share our heartfelt appreciation. We know we wouldn't be where we are today, as a movement or as an organization, without your generosity.

Pride Foundation first opened our doors in 1985. It was the height of the AIDS epidemic, and this crisis solidified the importance of our vision—creating hope and possibilities for our community.

Since then, Pride Foundation has offered the community a concerted way to invest in a brighter future together—whether by awarding a scholarship to a gay student who overcame family rejection, funding a trans-led organization that is increasing access to medically necessary healthcare, or partnering with local leaders to advance legal protections for LGBTQ people.

We have made incredible progress since our founding, and the recent Supreme Court ruling on marriage equality was a monumental step forward. With your investment, Pride Foundation's work will continue until everyone is able to be who they are, where they are.

We are stronger, better, and more effective together—a reality we have proven throughout our 30-year history.

Thank you for getting us to this moment. Our pledge to you is that we will not rest on our laurels or the movement's advancements. We will continue our work together to build a lasting movement for equality that is centered on our shared humanity.

With pride,


Seth Kirby


Kris Hermanns

Be who you are,
where you are...

Idaho

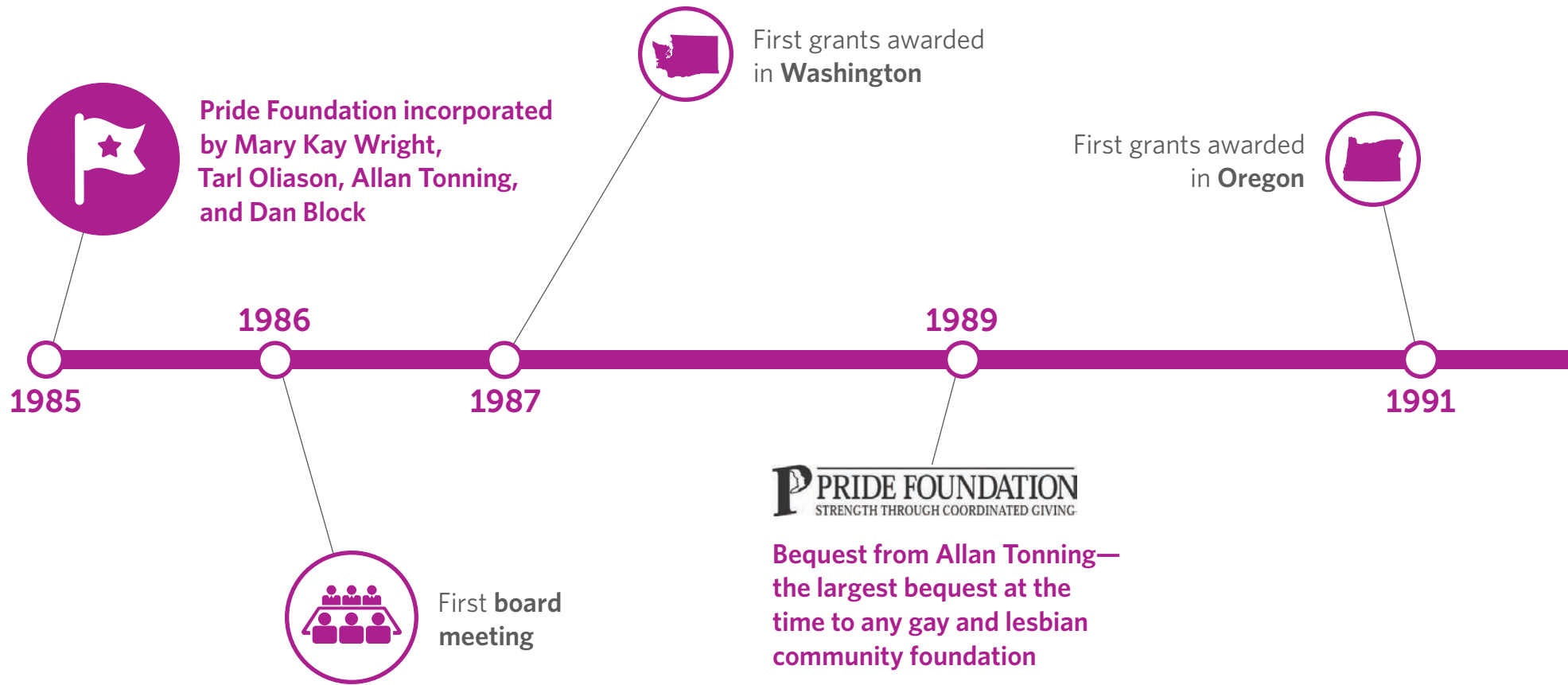
Sawtooth Mountain Range – McGowan Peak
Stanley, Idaho



Pride Foundation: 30 Years of Inspiring Hope



Enjoy these moments and milestones from Pride Foundation's 30-year history of advancing LGBTQ equality.





This timeline is only a snapshot of our history. For a more in-depth look at Pride Foundation and our movement over the last 30 years, visit pridefoundation.org/history.



First scholarship fund established: Brian M. Day Scholarship

Partnered with **General Electric** to update their equal employment opportunity policy to include sexual orientation*



One millionth dollar awarded!

1993

1996

1999

2000



First grants awarded in Montana, Idaho, and Alaska



Partnered with **McDonald's** to update their equal employment opportunity policy to include sexual orientation*

*Learn more about our shareholder advocacy efforts on page 10.



Pride Foundation: 30 Years of Inspiring Hope



PrideFoundation.org
launched

2001

Pride Foundation voted
one of *Seattle Magazine's*
Best Places to Work

2003

Partnered with **Walmart** to
update their equal employment
opportunity policy to include
sexual orientation*



2005

Bequest from Ric Weiland—
the largest single gift
to the LGBTQ movement



Ten millionth dollar
awarded!



2007

Launch of
Racial Equity Initiative



2008



This timeline is only a snapshot of our history. For a more in-depth look at Pride Foundation and our movement over the last 30 years, visit pridefoundation.org/history.



Launched
Queer Youth Initiative

2009



Partnered with **Proctor & Gamble** to update their equal employment opportunity policy to include gender identity/expression*

2012



Launch of
Homeless Youth Initiative

2013



Fifty millionth dollar
awarded!



Sixty millionth dollar
awarded!



2015

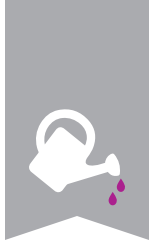
Launched **Why Marriage Matters Washington**—the \$1.5 million public education campaign to help spread the word about the importance of the freedom to marry

*Learn more about our shareholder advocacy efforts on page 10.

What We Do

Pride Foundation inspires giving to expand opportunities and advance full equality for LGBTQ people across the Northwest.

With your generosity, we are able to build organizations, support students, and connect leaders.



Grants

We invest in organizations and programs that meet the needs of LGBTQ youth, adults, and families across the Northwest.

From urban cities to rural towns, we know that the landscape for equality in Alaska, Idaho, Montana, Oregon, and Washington varies significantly.

With an emphasis on reducing the growing disparities and inequities facing our community, we partner with local leaders and nonprofits to invest in strategies and solutions that support people in their home communities.

Amount granted to support LGBTQ equality since our founding 30 years ago **\$56,630,000**

Number of grants awarded to nonprofit partners since 1985 **4,884**

Our funding supports the breadth of critical and timely issues impacting LGBTQ people, including:

- Workplace equality
- Safe schools
- Healthcare access
- HIV/AIDS support and prevention
- Food and housing security
- Elder care



Scholarships

While much has changed for the LGBTQ community since our post-secondary degree scholarship program was established more than two decades ago, the program continues to provide essential financial resources and community support to LGBTQ and allied students across the Northwest.

Pride Foundation scholars have incredibly varied personal and lived experiences and are representative of the diversity within our community. Many have been bullied or isolated—in some cases forced out of their homes—because of who they are. Receiving a Pride Foundation scholarship connects students to a wider community of supporters, providing important affirmation and encouragement.

Since 1993:

Amount invested in LGBTQ and ally students **\$3,949,927**

Number of scholarships awarded **1,523**

Number of volunteers that reviewed scholarships **2,879**

Number of scholarship funds established **68**



Food and Housing Security

In December of 2012, Pride Foundation announced a four-year initiative to confront the growing challenge of youth homelessness and its disproportionate impact on LGBTQ youth. With generous support from the Bill & Melinda Gates Foundation, we have funded innovative, collaborative approaches that build the capacity of service providers to address the unique needs of homeless LGBTQ youth in Washington State, with an emphasis on youth living in rural and remote communities.

Recognizing that systems-change takes time, we have awarded four multi-year grants as part of this initiative. Organizations that have received funding through our Homeless LGBTQ Youth Initiative include:

- Northwest Youth Services—Bellingham, WA
- Oasis Youth Center—Tacoma, WA
- Odyssey Youth Movement—Spokane, WA
- Northwest Network—Seattle, WA

In the coming months, we will be expanding this work throughout Alaska and Montana thanks to support from FLGBTQI + ADAM Queer Youth Initiative and generous donors from Montana. As we continue to evaluate these efforts, we will build on key learnings and best practices to work toward systems-change across our entire region.



Workplace Equality

Since our shareholder advocacy work began in 1997, Pride Foundation has successfully worked with 22 companies to update their equal employment opportunity (EEO) policies to include sexual orientation and gender identity/expression, filing shareholder resolutions when necessary. Over the years, we have worked with McDonald's, Walmart, Exxon-Mobil, Procter & Gamble, and Amgen, among others—bringing protections to more than 3 million workers.

We've made incredible progress around workplace equality recently, with 10 successful engagements in the last year alone:

- Alaska Communications Systems
- Alaska General Communication Inc.
- Expeditors International
- First Interstate BancSystem, Inc.
- General Communications Inc.
- Greenbrier Companies
- Mentor Graphics
- PACCAR
- Schnitzer Steel
- Stillwater Mining

We will use these victories to inspire other companies to update their policies, bringing much-needed protections to LGBTQ workers across our region and the country.

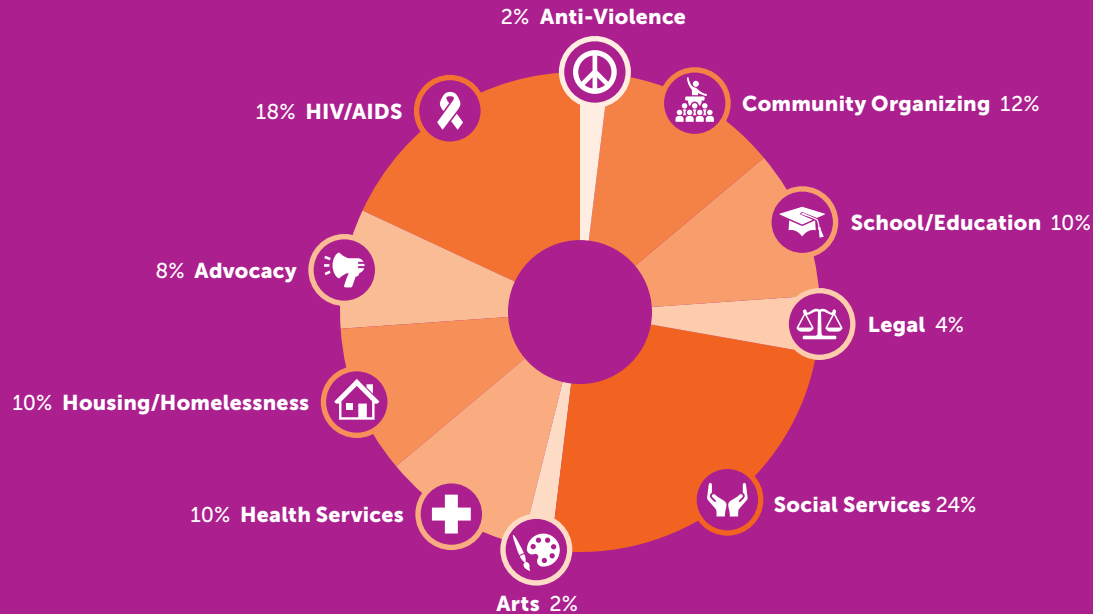
Saint Mary Lake – Glacier National Park
West Glacier, Montana

Be who you are,
where you are...

Montana

Your support allows us to build the capacity of local organizations to address the issues that matter most to our community.

Issue Areas



Funds Granted in 2014:

\$6,820,060

to

239 organizations



Building Organizations

Making Healthcare Accessible to All

“As a transgender woman who has sought out healthcare in a rural environment, I’ve faced my share of challenges,” said Bree Sutherland, Executive Director and co-founder of Gender Expansion Project in Montana. “When I found a doctor, I had to teach them how to provide care to me.”

Bree feels fortunate that she knew how to research what she needed for her own care and was able to share that with her provider.

She acknowledges that’s not always the case: “For the majority of people, if your doctor says: ‘I don’t know what to do for you, or how to do this,’ you’re going to go find another provider.”

For transgender people living in Montana, the network of doctors who are able to provide culturally-competent care are few and far between. Bree estimates there are only 10 to 15 providers in the state that offer affirming and supportive care for transgender patients. That number is low for any state, but the expansive geography of Montana makes the situation more grave.



Bridgercare’s medical staff

Two of Pride Foundation’s grantees in Montana—Gender Expansion Project and Bridgercare—are working to address this critical need.

Gender Expansion Project promotes gender-inclusive education and awareness through advocacy, research, evidence-based care, and policy recommendations.

“There are providers that are willing to provide care, but don’t have the ability to do so because nobody has trained them,” Bree reflected. “Outside of traveling to Seattle or Philadelphia, there was no way to get that education.”

This led to the creation of Gender Expansion Project’s biannual Transgender Health Conference. Professionals from across the country attend to learn about a range of issues, including medication dosing, hormone replacement therapy, surgical procedures, post-operative complications, and more.

“Our goal is to build a comprehensive network of competent and responsive providers, and to support them,” shared Bree. “We want to bring providers to a place where they’re comfortable and can see that offering this care is creating a huge difference.”

Bridgercare’s current efforts to be a more inclusive healthcare clinic are focused on training staff, addressing organizational culture, and evaluating and updating their print resources and literature. The intent is to make Bridgercare’s intake process as inclusive as possible before they expand into offering hormone therapy for the first time this fall.

“We recognize that we want to do this well, and that many transgender people have had horrible experiences with healthcare,” said Stephanie McDowell, the Associate Director of Bridgercare. “We don’t want to make the same mistakes. We want people to feel like we’re a safe place that’s non-judgmental and can provide good, quality care.”

Bridgercare’s emphasis on affordable care is also critical: “If you’re choosing between \$1,000 on a procedure or \$1,000 on groceries for your family, you’ll choose groceries,” Stephanie shared. “Offering a sliding fee scale for services increases people’s options.”

Thanks to the work of Bridgercare and Gender Expansion Project, Montana is increasing access to care for transgender people across the state.

“For us, it’s about improving lives,” said Bree. “We have a long way to go before transgender people are truly equal to everyone else, but we’re going to fight every step of the way.”

“We have so many people that could have had positive, sustainable transitions, but because of the environment they live in, because of the lack of adequate, competent care, have really struggled.”

—Bree Sutherland

Your commitment allows us to support students in reaching their full potential through our scholarship program and initiatives.



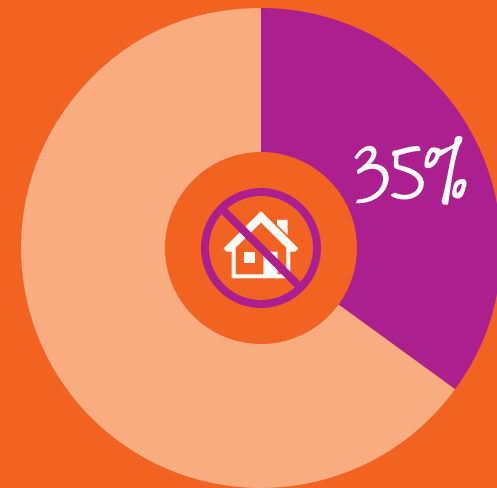
Scholarships Awarded in 2015:

\$403,850

to

124 students

**in Alaska, Idaho, Montana, Oregon,
and Washington**



**of our 2015 scholars
have experienced homelessness**



Supporting Students

Creating Safety and Permanency for LGBTQ Youth in Care

Growing up in rural Washington was a challenge for Jesse,* who is pansexual and gender queer. To find peer support and affirmation, they have been utilizing the services and programming provided by Odyssey Youth Movement.

After Jesse came out to their parents, things got really bad at home. “They were on the verge of being kicked out or running away,” shared Jude McNeil, Executive Director at Odyssey Youth Movement, a Spokane-based organization.

Jesse’s friend’s mother wanted to take them in, and through case management, Odyssey connected them with a lawyer. This ensured that the necessary steps were taken so Jesse could legally go live with their friend, instead of being classified as a run-away.

“This young person was extremely stressed—worrying about basic needs, grappling with losing their family, and the depression that comes with that,” said Jude. “Now they’re happy, have graduated



Youth leaders from Odyssey Youth Movement

high school, and are attending college. I know they wouldn’t be in the same place without this support.”

While Jesse’s story has a happy ending, countless LGBTQ youth struggle to find permanency in out-of-home care.

“Many youth report leaving home or foster care because they’re finding more acceptance from a street family than anywhere else,” Jude shared.

The lack of acceptance from caregivers contributes to the fact that LGBTQ youth make up 40% of the homeless youth population. Pride Foundation’s Homeless LGBTQ Youth Initiative is focused on addressing this breakdown in the system by building the capacity of service providers to address the unique needs of homeless LGBTQ youth. As part of this work, we awarded Odyssey a two-year grant totaling \$50,000.

“In Washington, most systems-level professionals don’t receive information on how to best support LGBTQ youth,” noted Jude. “It’s not that there’s a lack of social workers and foster parents who want to support LGBTQ youth, it’s that the system isn’t providing them the necessary tools and information.”

*A pseudonym was used to protect this individual’s identity



Oregon Scholar Reflection: Aster Wolfe

In order to address this, Odyssey is partnering with the Children's Alliance to facilitate LGBTQ professional development trainings for employees of Children's Administration, the Department of Social and Health Services' (DSHS) child welfare agency for Washington.

"How can you not address institutional homophobia, heterosexism, and transphobia when doing homeless youth work?" Jude said. "If you don't, you're ignoring 40% of the population."

In the first year of this grant, trainings were provided to Children's Administration staff in Spokane. Over the past year the training expanded statewide—with an emphasis on rural areas. In total, 1,579 out-of-home care providers received training.

"Youth are experiencing their sexuality and gender in more fluid ways," shared Jude. "Everyone working with homeless youth needs to know what that means in terms of resources, support, and placement."

Moving forward, Odyssey will be collecting data on homeless LGBTQ youth and working to ensure that Children's Administration continues implementing the LGBTQ training curriculum.

Jude's ultimate goal is for "LGBTQ youth who experience homelessness to be happy, have stable housing, finish school, and live without always having to be in survival mode."

In order to create lasting systems-change, this work must be ongoing. Odyssey created a blueprint for the work moving forward, but it's up to all of us to continue elevating the needs of LGBTQ homeless youth.

With training, resources, and support, our hope is that more stories end like Jesse's—with LGBTQ youth finding permanent, loving, affirming homes.



"When I came out as queer and transgender, the world told me I was a traitor, a medical oddity, and invisible."

I was lucky to find other queer teens who showed me that I was brave, granting a unique perspective that is invaluable in this struggling world.

We shared secrets, like how to talk to doctors and which public restrooms were safest. I faced obstacles like many of my peers: mental health challenges, addiction, homelessness, and navigating a system that didn't recognize our existence.

After dropping out of school due to homo- and transphobia, I am now returning to a college where there are posters about respecting gender diversity.

We've made transformative gains in our movement, yet the distance we still have to go to ensure that everyone in our community can live with dignity and respect is significant. That is why I am pursuing a nursing degree—to advocate alongside those who have been left out.

Our world is designed to keep the most disenfranchised and oppressed in the shadows—queer and transgender folks, people of color, LGBTQ folks with disabilities or mental health challenges, our elders, and youth.

With my Pride Foundation scholarship, I will educate healthcare providers to be competent; creating mental health and addictions care that is relevant to our experiences and unique challenges."

Your generosity allows us to connect leaders by sharing best practices, fostering collaboration, and aligning people around common goals and interests.



**In 2014, Pride Foundation began
co-hosting a statewide**

LGBTQ roundtable

**in Oregon, comprised of organizations
and leaders working in our
movement toward full equality**



Convened business leaders

**in Alaska to elevate the importance
of protecting LGBTQ
employees from discrimination**



Connecting Leaders

Building Community Across Alaska's Rugged Terrain

Alaska is the largest and most sparsely populated U.S. state—spanning a total of 663,300 square miles, with an average of only 1.2 people per square mile.

Alaskans have a term to describe the accessible urban areas: the “Railbelt.” The Railbelt stretches from the southern end of the Alaska Railroad in Seward, to the northern terminus in Fairbanks.

If you live on the Railbelt, specifically near Anchorage, you have greater access to services and your basic needs are less expensive—especially food, gas, and electricity. You also have the ability to easily drive to your medical appointments and, if you’re a member of the LGBTQ community, to find your people.

If you live outside the Railbelt—in Juneau or other parts of Southeast Alaska—services are harder to come by, and you’re completely off the road system, making you dependent on ferries or planes.

It’s within this isolation that Pride Foundation’s all-volunteer, Juneau-based grantee SEAGLA—the Southeast Alaska LGBTQ Alliance—operates. In addition to coordinating Juneau’s pride festivities, SEAGLA also organizes the Trans*-Alaska Pipeline support group, facilitates weekly social activities, and advocates for the Southeast LGBTQ community.

“There are definitely ups and downs of living in a geographically isolated place like Juneau,” said James Hoagland, board member of SEAGLA.

“While it feels lonely and disconnected at times—with limited resources and few people—it can also be encouraging to band together as a community and treasure the assets we do have.”

Over the past year, Pride Foundation has supported SEAGLA’s efforts in building its organizational capacity and increasing the infrastructure

SEAGLA volunteers march in the Juneau Pride Parade



of the LGBTQ community in Southeast towns, such as Sitka and Ketchikan. For the first time this year, both towns held a Pride celebration with support from SEAGLA. Volunteers from SEAGLA will be attending the Southeast State Fair in Haines for the first time as well—a 5-hour, 92.5-mile ferry ride north—to expand the organization’s reach.

“Trips like this require us to take an Alaska Marine Highway Ferry for several hours,” James noted, “but connecting across our rugged terrain makes it all worth it!”

While the outcome of building a more connected LGBTQ community in Southeast Alaska may be hard to quantify, SEAGLA’s work is clearly having an impact.

Their impact can be seen in the story of a 15-year-old transgender student who lives in Juneau. Last winter, he attended a bowling event held by SEAGLA and was very shy, not interacting with many of the people there. However at this year’s pride picnic in Juneau, he shared his experience of the peer support he’s received over the past year, saying that he was ready to get more involved. SEAGLA was able to connect him with an LGBTQ Youth Leadership Summit in Anchorage and he has enthusiastically applied to be selected for the Summit.

James shared that seeing him “boldly march through the streets of downtown Juneau with the transgender flag on his back in the July 4th parade Pride contingent made us all realize just how important SEAGLA’s presence is.”

LGBTQ Leadership in Philanthropy



In the last year, six students have gone through our internship program, which works to create a leadership pipeline for LGBTQ people in philanthropy, with an **emphasis on queer people of color and transgender people.**

Be who you are,
where you are...

Oregon

Multnomah Falls - Columbia River Gorge
Bridal Veil, Oregon



Grantees

With support from generous donors and dedicated volunteers, Pride Foundation has granted a total of \$6,820,060 to 239 organizations advancing LGBTQ equality in the last year. This includes our community grants program, donor designated, and donor advised funds.

This list reflects grants made in our fiscal year: **April 1, 2014 – March 31, 2015**

Alaska

Alaskan AIDS Assistance Association
Identity, Inc.
SEAGLA

Idaho

American Civil Liberties Union of Idaho
Inland Oasis, Inc.
North Idaho AIDS Coalition
PFLAG Coeur d'Alene
Youth Alliance for Diversity

Montana

Bridgercare
Gender Expansion Project
Montana Two Spirit Society
NCBI Missoula
Open Aid Alliance
Tumbleweed Program, Inc.
Zootown Arts Community Center

Oregon

Center for Intercultural Organizing
Educate Yá
HIV Alliance

Human Dignity Coalition
Immigration Counseling Service
Jesuit Volunteer Corps
Lotus Rising Project
Mercy Corps
Oregon Attorney General's Sexual Assault Task Force
PFLAG Oregon Central Coast
SAGE Metro Portland
TransActive Gender Center
Western States Center

Washington

API Chaya
Art With Heart
Arts Fund
Associated Recreation Council
Atlantic Street Center
Auburn Youth Resources
Bailey-Boushay House
Bike Works
Blue Mountain Heart to Heart
CAIR Project
Camp Ten Trees
Cardea Services
Care to Help Project

Center for Children and Youth Justice
Center School Community Association
Central Area Senior Center
Children's Home Society of Washington – Vancouver
Children's Home Society of Washington – Walla Walla
Citizens Against Domestic & Sexual Abuse
Community Foundation for Coupeville Public Schools
Consejo
Downtown Emergency Services Center
Earth Ministry
Elizabeth Gregory Home
Entre Hermanos
Epiphany School
Everett/Snohomish PFLAG: GLOBE
Families Like Ours, Inc.
Farestart
Flying House Productions
Food Lifeline
Gay City Health Project
Gender Justice League
Global Partnerships
GSBA
Habitat For Humanity
Holocaust Center
The Hub

Grantees continued

Ignation Resource Center
Infectious Disease Research Institute
Ingersoll Gender Center
Integrative Psychological and Social Services
Intercommunity Peace & Justice Center
International Rescue Committee
Intiman Theatre
Japanese American Citizens League, Seattle Chapter
Jewish Family Service
Jewish Federation of Greater Seattle
KCTS Public TV
King County Sexual Assault Resource Center
King FM, 98.1
KUOW 94.9 FM
Lakeside School
Landesa
Legal Voice
Lifelong AIDS Alliance
Museum of History and Industry
National Film Festival for Talented Youth
Nature Conservancy of Washington
Neighborhood House
Northwest Harvest
Northwest Network
The Northwest School
Northwest Youth Services
Oasis Youth Center
Odyssey Youth Center
Pacific Northwest Ballet
Peace Community Center
Peace for the Streets by Kids from the Streets
Peace Trees Vietnam
Pierce County AIDS Foundation
Pigs Peace Sanctuary
Pizza Klatch
Planned Parenthood of the Great Northwest
Plymouth Church
Plymouth Housing Group
Port Townsend Food Bank

Program for Appropriate Technology in Health
The Q Card: Empowering Queer Youth in Healthcare
Quest: A Program of Three Rivers Coalition
Rainbow Center
Rainier Scholars
Real Change
ROOTS Young Adult Shelter
Saint Paul's Episcopal Church
Seattle Art Museum
Seattle Children's Theatre
Seattle Counseling Service
Seattle Men's Chorus/Seattle Women's Chorus
Seattle Public Library Foundation
Seattle Symphony Orchestra
Seattle University
Seattle University School of Law
Senior Services
Social Justice Fund Northwest
Spokane AIDS Network
St. Joseph's Baby Corner
Stonewall Youth
Swedish Heart and Vascular Institute
Swedish Medical Center Foundation
Tacoma Art Museum
Teen Feed
Thin Air Community Radio
Three Dollar Bill Cinema
University Congregational Housing Association
University Congregational United Church
Valley Cities Counseling & Consultation
Vashon Maury Island Land Trust
View Ridge Elementary School ASB
Washington State Budget & Policy Center
Wayfind
Westside Baby
Westside Unitarian Universalist Church
Wing Luke Asian Museum
Women's Funding Alliance
YouthCare
YWCA

Other States

ACLU Foundation, Inc.
Afghan Children's Fund of National Geographic Society
American Cancer Society
Brandeis University
Carolina Friends School
Clinton Foundation
Columbia Law School Association
Diverse and Resilient
Doctors Without Borders
Earth Island Institute
Earthjustice
Heifer International
Lambda Legal Defense & Education Fund
LGBT Community Center of the Desert
Mazon
National Center for Lesbian Rights
National Council of Jewish Women
Natural Resources Defense Council
Nature Conservancy
New Israel Fund
Omprakash Foundation
Orangutan Outreach
Oxfam America
Palm Springs Art Museum
Partners In Health
PFLAG
Planned Parenthood Federation of America
Princeton University
Serenity Hospice and Home
Sierra Club
Smile Train
Smith College School of Social Work
Tricycle - The Buddhist Review
University of Texas MD Anderson Cancer Center
Vanguard Charitable Foundation
Wesleyan University



Our Donors

Pride Foundation donors not only make a difference today, they are also investing in a brighter future for our community. Thank you to more than 1,100 donors for the important role you play in creating hope and possibilities for LGBTQ people and families.

This list reflects donations from our fiscal year: **April 1, 2014 – March 31, 2015**

\$25,000 or more

Anonymous (1)
Cheryl Beighle & Steve Schroeder⁺
William S. Etnyre⁺[®]
Bob Evans^{*} & Steve Davis⁺[®]
Pam Foster & Liz Austin Fund[®]
Alex Jacks⁺
Nancy S. Nordhoff & Lynn Hays[®]
Tony Raugust & Joe Curiel[®]
Len Tritsch[♥][®]
Kathryn Wehle^{*} & Theresa Haynie⁺[®]

\$10,000 – \$24,999

Mika Albright
Paul Beaudet^{*} & David Wertheimer⁺[®]
Douglas Exworthy^{*} & Kent Poush[®]
Jason Lamb & Alan Kristal[®]
Rebecca Laszlo & Sara Intriligator⁺
Jim Miersma & Bill Hammer⁺[®]
Leigh Morgan & Sarah Moseley

Judy Pigott[®]
Scott & Katie Renschler⁺[®]
Robert Roblee & Ron Johnson⁺[®]
Gary Southerton & David Isla⁺
J. Thompson & J. Wittrock⁺[®]
Nicholas Utzinger & John Rochford⁺[®]

\$5,000 – \$9,999

Anonymous (3)
Ward Beattie[®]
Angie Buysse & Cynthia Per-Lee
Frank Chaffee & John Gliessman[®]
William L. Fleming⁺⁺[®]
Jason Fussell^{*} & Robert Heuer
Patrick Gallagher⁺
Jeff Graham and John Longres⁺⁺[®]
Rex Himes[®]
Christopher Keyser & Steven Castelee[®]
Martin Lantz⁺[®] & Donald Coffman[♥]
Paul Lenehan & Jonathan Warn⁺

Doug Morgenson⁺[®]
J. Ritchie & Mark Linvill
Chet Robachinski & Jerry Slipman⁺[®]
Linda Scoccia⁺
Paul Tripp & Mark Weber
Benjamin G. Vazquez⁺

\$2,500 – \$4,999

Anonymous (3)
Joyce M. Allen^{*} & Jessica Lynn[®]
Ben Bakkenta^{*} & Eric Snow[®]
Phoenix Benner⁺
Geraldine V. Cole⁺⁺[®]
John Dagues & Jack Odell⁺[®]
Chris & Judy Elder
Ellen Ferguson & Diana Sill[®]
Kris Hermanns^{*} & Merri Baldwin
Carol Kerley & Linda Dunham⁺
Jonathon Lack^{*}

Dana Luce & Allison Smith
Robert A. Riopelle⁺[®]
Mike Scott^{*} & Cullen Brady[®]
Peter Shalit & Bob Clark[®]
Stephen Silha & Gordon Barnett⁺[®]
Jeffrey Stolz & Tim O'Connor[®]
David Thorpe, CPA^{*} &
Geoff Greenlee, DDS, MSD[®]

\$1,000 – \$2,499

Anonymous (3)
David S. Anderson
Harry Anderson & Terry Bible
Christopher Beiter[®]
Jason Bergevin & Kelly Abner
Peter Bergler & Brent Haynes[®]
Jabe Blumenthal & Julie Edsforth[®]
John Bodoia[®]
Robin^{*} & Stephen Boehler
Timothy Bradbury, JD[®]

Our Donors continued

Aaron Browning
 Anne & Nicole Browning*
 Rebecca Cleary & Stacey Bakula♥
 Bryan Cline*¹⁰
 Scott Clyde*¹⁰
 Oliver Colbert & Eric Olson
 Celeste Cole¹⁰
 Robert Cundall* & Dan Bross¹⁰
 Peggy Dolane**¹⁰
 Riley Donelson
 Bob Eichler¹⁰
 Jeff Gaisford & Brian Parker¹⁰
 Rebecca Gonzales
 Farand Gunnels* & David Victor¹⁰
 Darryl Gurecky
 Jeff Harder¹⁰
 Lee Heck & Bill McGee¹⁰
 Lucy Lee Helm
 Peter D. Hiatt & Ron Huden¹⁰
 Tuyen Hoang
 Gary Hollander* & Paul Mandracchia♥
 John Holliday & Glenn Lawler*¹⁰
 Rocky Horan & Frank Rojas
 Emilie Jackson-Edney*
 Brady Jensen & Mario Cristancho¹⁰
 David Kersey¹⁰
 Daryl J. King & Todd G. Hagan¹⁰
 Quentin King & Glen Kriekenbeck
 Monica Landry
 Hannah Love¹⁰
 Dean Lynch & Michael P. Flannery¹⁰
 Vi Martin¹⁰
 Sam McVeety & Jordan Goldwarg*
 Marsha A. Morgan & Claire S. Moore

Karen Mudd* & Monica de Baca*
 Rebecca Nerison
 Martha Norberg
 Marcie Osborn¹⁰
 Karl Otto
 Jane Owen
 Dan Phelan & Chris Mulready¹⁰
 Janice Pickard & Anne Harvey¹⁰
 Laura Pierce**¹⁰
 Pete Pinney
 Marjorie Press*¹⁰
 Thomas U. Rachal, Jr.
 Ann Ramsay Jenkins
 Tom Retan
 Jean Rietschel & Lois Thetford¹⁰
 Elias Rojas*
 Margaret Rosenthal & Sarah Jessup
 Cam Saberhagen
 Jeff Sakuma* & Ron Pederson¹⁰
 David & Debbie Sander
 Fred Schoen*¹⁰
 Julie Shapiro & Shelly F. Cohen*¹⁰
 Steve Sheehy & Davis Bergmann¹⁰
 Sharon Shoemaker
 Tara Smith* & Ahmed Amin¹⁰
 Lawrence B. Stone & Jan Jecha¹⁰
 Larry Stonesifer & Ron Angress¹⁰
 Stuart J. Stuple &
 Bjoern-Erik Hartsfvang¹⁰
 Tim Sweeney
 Miles K. Takahashi¹⁰
 Cheryl & David Ethan Trooskin-Zoller¹⁰
 Wakefield*¹⁰
 Michael Westrick¹⁰

Mary Willis
 Carl Wilson

\$500 - \$999

Anonymous (3)
 Barbara Bailey**¹⁰
 Ted A. Bash
 Andy Benjamin & Nan Herbert
 Wayne W. Bitterman¹⁰
 Don Botts & Don Anderson¹⁰
 Laura S. Brown, Ph.D. & Lynn Brem¹⁰
 Margarethe Cammermeyer &
 Diane Divelbess¹⁰
 Chanda Carlson* & Janice Wall¹⁰
 Victor Carlson¹⁰
 Cat Carrel¹⁰
 Louise Chernin* & Mary Klein¹⁰
 Daniel Christopher¹⁰
 Anne Xuan Clark*
 Catherine & Ned Cooney
 Nicole Cundiff*
 William D. Darby & Zane T. Van Kirk¹⁰
 Craig & John Darling
 Mark Demanes¹⁰
 Derivative Duo*¹⁰
 Deborah DeWolfe & Kate Stewart¹⁰
 Sara Elward*¹⁰
 Susan Ettner & Fred Frankel
 Dave Fregeau
 Friends of Patricia Van Kirk*¹⁰
 Jane Goldman
 Paul & Clara Grace¹⁰
 Brie Gyncild
 Audrey Haberman* & Marge McGinty¹⁰

Matthew D. Haggerty, L.M.P &
 Marc Stiles¹⁰
 Morgan Halvorson
 George M. Hampton, Jr.*¹⁰
 Michael Hampton
 Roy Hamrick & Stephen Carstens¹⁰
 Jeff Hedgepeth* & John Medlin¹⁰
 Dr. Jean Hernandez* & Erin Foy¹⁰
 Denys Howard¹⁰
 Jason J. Hunke*¹⁰
 Eric Jones
 Cyndy & Scott Kelchner
 Katelen Kellogg* & Joe Hatcher
 E.J. Kilgore & J.R. Pierce¹⁰
 Seth Kirby* & Anna Shelton
 Keiko Koizumi*¹⁰
 Augusta Laidlaw
 Mark Levine & John Keppeler¹⁰
 Taryn Lindhorst & Cynthia Riche¹⁰
 Kerry Lobel & Marta Drury
 Dawn & Scott Lockwood
 Ricardo Lopez & Glen Hemingson
 Ted Lord* & Chris Cooper¹⁰
 Theresa Lourde¹⁰
 Larry Lowary & Gerry Betz
 Andrea Manzo
 Cara Marks
 Kimberley McCollim
 Jane Meseck & Cathy Schick¹⁰
 Chuck Mize¹⁰
 Daniel Moore & John McCoy¹⁰
 Debra Mulnick & William Bourland
 Stephen Nash
 Eric & Julie Nelson

Our Donors continued

Dale Nienow & Becky Brown-Nienow[®]
 Scot Orriss & Adam Warren
 Deborah Oyer & Tom Weeks[®]
 Sharon E. Parkman[®]
 Steve Parsons⁺
 Scot R. Partlow* & Dean A. Kralios[®]
 Marschel Paul* & Margaret Sutro[®]
 Alex Pava* & Clif Marr[®]
 Dirk Peterson[®]
 Jackie Phillips[®]
 Susan Popp & Gordon Noraine
 Lee Powelson
 The Purple Lady/Barbara J. Meislin Fund[®]
 Lorraine Roberts
 Jennifer Robohm
 Margaret Ryyanen
 Michael P. Schaefer⁺
 Stephen L. Schenzel[®]
 Nicole Scillo
 Sara Shepard & Chris Huntley
 Michael Shiosaki* & Ed Murray
 David Showalter[®]
 Edith Martin Shreeve
 Sarah Shreeve
 Jean Singer* & Dyanne Sheldon[®]
 Gregory Smith* & Ken Spencer
 Jim Strain[®]
 Gayle Stringer & Nancy Nickelson[®]
 Bonnie Stutzman[®]
 Kevin Teeley & Greg Stair[®]
 William Teska⁺[®]
 H. William Thieleman[®]
 Andrew Thompson[®]
 Judy Tobin & Michael Baker[®]

Stewart Tolnay & Patty Glynn
 Janice Van Cleve⁺
 James Walker, Jr.
 Mary Whisner & Mary Hotchkiss[®]
 Jean-Paul Willynck*
 Michael Workman[®]
 Jimbo Worm*[®]

\$1 - \$499

Anonymous (30)
 Lloyd Adalist[®]
 William Seth Adams &
 Amy Donohue-Adams
 Kathleen Albro[®]
 Anastasia R. Aldecoa[®]
 Anna & Matt Alexander
 Cynthia Alexander
 Bruce Allen & Jim Balkowitsch
 Carolyn Allen[®]
 John Altman
 Abbie Anderson
 Beverly & Michael Anderson
 Ian Anderson[®]
 Kesson Anderson
 Kirsten Anderson
 Lisa Anderson
 Susan M. Anderson
 Lisa & Henry David Andrews
 Judge Marlin Appelwick[®]
 Anne Appleby[®]
 Kathleen & Tommy Arends
 Sondra Arnold
 Lynn Ate & David Ackley
 Laura & Oscar Avallaneda-Cruz

Bonnie Avery
 Nancy & Dale Avery
 William Aycock & Don Bojarski[®]
 Mary Ayres
 Thomas Azzarella
 Jeffrey Babauta[®]
 Glenn Bafia & Kirk Petersen
 Eugene & Cheryl Baker[®]
 Nathan & Tracy Baker
 Robert Andrew Baker
 Janet & Ed Bala
 Carol & Mike Balasa[®]
 Pamela Banks
 Carol Barnes
 Michelle Bass
 Mary Batterson
 Kealy Baughman
 Whitney Bausch
 Ronald Bayer[®]
 Susan & Les Bechdel
 Andrew Beeks
 Molly Bell
 Sandi Bell & Bev Ross
 Ramon & Linda Beluche[®]
 Estate of Faygele ben Miriam⁺
 Brad Benner
 Jane Bensel & Pamela Philip
 John Berg & Robert Roth[®]
 Wendy Birmingham
 Peter Berry & Christopher Tolfree[®]
 Susan Berston & Patty Stanton
 Susan Betts
 Brad Bigelow
 Katie Billings

Cynthia Billmeyer
 David Bird[®]
 Sandra Birnbaum
 Kristin Bishop
 Pavel Blagov
 Trish Blanchard[®]
 Michael Blankenship
 Kori Blitstein & Japhet Koteen
 Shirley Blunt
 Joanna Boatman[®]
 Sara Boehler
 Leah Bolotin & Doreen Lyne
 Mark & Eva Bonnema
 Jack & Frankie Bookey[®]
 James Boone & Joseph Bucuzzo[®]
 Rhonda Boothe & Jessica Salmonson[®]
 Karen Borell & Barbara Stein
 Randy Boshart & Rod Schepper
 Kathy Boullin & Don Hogeland[®]
 Joanne Bourgeois[®]
 Lynsey Bourke
 William & Nancy Boyd
 Ed & Delores Boyle
 James Braden[®]
 Pierre Bradette
 Carla Bradshaw
 Laura & Jacques Bragg
 Robert Bragg & George Muldrow[®]
 Fineke Brasser
 Thomas Brickley
 Bobbe & Jon Bridge
 Erin Bristow
 Scout Broadhead & Jessica Wootten
 Lisa Brodoff & Lynn Grotsky[®]

Our Donors continued

Zoey Brodsky*
 Carol Brown®
 Celie Brown
 Jim Brown & Jim Richardson
 Nathaniel Brown®
 Richard Brulotte & Bonnie Jones
 Tatia Brulotte
 Pamela Brunsfeld
 Laura Bry♥
 Natalie E. Bryson®
 Kelly Buchanan & Linda Jamieson®
 Marsha Buck®
 Melanie Buckner & Erica Erland
 Barbara Buehler & Gary Clemensen
 Clifford Bunch & David Pritchard®
 Connie Burk & Jake Fawcett
 In memory of Lee S. Burke+
 Jeffrey Burkhardt®
 Janie Burns & Lori Steele
 Laurie & Rich Burns
 Nancy Burns
 Randall Burns
 Janet & William Bush
 Dan Butler
 Erin Byrnes
 Meredith Cahn
 Natalie M. Cain®
 Lauren Caldwell & Gabriel Furshong
 Jess & Riley Caldwell-O'Keefe
 Ruth & Scott Call
 Tom Camel
 Claudina Campbell
 Jan Campbell
 Daniel Caracciolo & Donna MacKenzie

Ruth & Davie Carey
 Dennie Carlson
 Kara Carlson
 Tylene Carnell*
 Patrick Carr®
 Linda Carrol®
 Sharon Carroll®
 Katie Carter*
 Mary & Xandy Carter
 Colleen Cartwright
 Jessicah Carver
 Ann Casey
 Melissa Castagna
 Celia Castle & Brenda Bauer®
 Rachel Castrovinci
 Katherine Cecchini Beaver
 Ken Cederstrand®
 Lori Celaya
 Leroy Chadwick®
 Caroline Chan & Erin Gray
 Richard U. Chapin
 Gina Chastain
 Anna Chavelle & Chris Knutson®
 Thomas Cherry
 David Chivo
 Teresa Chrisinger
 Sallie & Richard Christensen
 Susan Christian®
 Sharon Christoph & Chris Davidson
 Linda Cipriano
 Ryan Clark & Jessi Scott
 Ted Clark & Eugene Otto
 Paula Clarke & Merlin White
 Christine S. Clothier

Andrew Cohen & James Packman®
 Jennifer A. Cohen
 Kathryn Comer-Tuss & David Tuss
 Lisa M. Conner
 Anna Constant
 Clifford Cook
 Kathryn Cook
 Kim Cook
 Emily Copeland
 Caitlin Copple*
 Patti Copple
 Patrick Cornelius
 Travis Cossel & Carmen Morawski
 Jarod C. Couch
 Jim & Virginia Court
 Barbara Courtney & Art Lange
 Gene & Judy Craig
 Blanche Crandall
 Gordon Crawford & Rebecca Herzfeld®
 Lillian Crawford®
 Deb Crespin & Lois Harris
 Roberta Crockett
 Michele Cronen
 Kim Crowley
 Sara Crozet-Robin
 Elysia Cruz
 Jose Cruz
 Kim & Chris Culberson
 Betsey Curran & Jonathan King®
 Sabrina Currie
 Chris Curry®
 Don Curtis, Jr. & Scott Squier
 Julie & Brian Daellenbach
 Suzannah Dalzell

Emily Danforth & Erica Edsell
 Nancy Daniels
 Jeremy Davey
 Eric John David
 Char Davies®
 Gary Davis & Rod Shutt
 Joel C. Davis & Shawn Holman®
 Kathleen Davis®
 Robert Davis
 Paulette de Coriolis
 Allyson Dean
 John DeBoer
 Rachael DeCruz*
 Roberta & Manny DeCruz
 Anita K. deGive®
 Maryanne deGoede
 JamieLou Delavan
 Jean DeMaster
 Joe & Naomi Denhart®
 Andy Dickinson & Patrick Schultz
 Dennis Dillin & Steven Scheller
 Andrew Dillman®
 Susan♥ & George Dimitroff®
 JJ Dion
 Megan Dixon & Scott Knickerbocker
 Steven P. Dolberg
 Anna & John Doran
 Jordonna & Michael Does
 Steve Downey
 Linda & Jeffrey Downing
 R.J. Duckworth®
 Dennis Duff
 Jennifer Dunn
 Lee Dybdal & Paige Williams

Our Donors continued

Theresa Earenfight
 Charles Easterberg[®]
 Christopher Economakos
 Amy Edgecomb
 Khalil Edwards & Zack Mohamed
 Susan Edwards & Jim Ernest
 James Egnew & Ana Dronkert-Egnew
 Susan M. Eidenschink[®]
 Keith Ekness[®]
 Niki & Jamie Elenbaas
 Len & Linda Elliott[®]
 Karen & Wayne Ellis
 Richard Ellison[®]
 Riley Embler
 Sarah Emerson
 Wanda Emmert
 Debbie Epstein
 Judith Erickson[®]
 Barbara Ertter
 Maddie Ettlin
 Christopher C. Evans[®]
 Richard Evans
 Lynn Everson[®]
 Karin Eysel & Marcelo Serpe
 Erin Fairchild
 Charles Farruggio & Bill Goeren
 Barbara L. Fauria
 Charles D. Fay[®]
 Jeffrey Feiffer & John Briggs
 Maureen & David Feit
 Peter Fels & Nancy Helget[®]
 Rick Fereday
 William D. Ferguson, M.D.[®]
 Elaine Field & Lisa Sokanoff[®]

Becky Finkbeiner
 Kathryn Finn
 Kurt Fischer
 Steven Fischer
 Danielle Fish
 Billie Fisher
 Margo Flaherty
 Brian Flikkema
 Rebecca & Sharon Flynn
 Amy Mae & Kathryn Forester
 Kathleen Formella
 Natalie Fortune
 Dawna & Nick Fowler
 Kenneth Fowler[®]
 Jessica Frederick
 Cara Friang
 William Friedman
 A Friend of CM Rocks
 Jana Fry & Pam Wolfe
 Moffie Funk
 Joshua Furman
 Ginny & Jack Furshong
 Helen Gamble
 Susan Gans & Mary Ann Greco[®]
 Donavan Garner & Kurt Carlson
 Diane Gasperin
 Jennifer & C. David Gass
 Hans Gasser & Kate Robertson
 Katrina & Ian Gates
 Janie & Laurence Gebhardt
 Brittany Gedeon
 William Geelan
 John Gessner
 Ginger Gibbs & Janet Guenther

Karen Gibbs
 Brian Giddens & Steve Rovig[®]
 Robert Gobeille
 Matt Goldenberg
 Suzanne Goodell & Chris Drilias
 Sameer Gopalani & Michael Millie
 Lynn Goralski
 Brenda Gordon
 Richard Gordon & Dennis McShane
 Jeff, Heather, Sophia & Eli Goronea
 Michelle & Sean Grabbe
 Satcha Graham
 Nina Grandy & Thomas Croley[®]
 Nicole Gratch
 Elvi Gray-Jackson
 Bruce Greeley
 Amanda Green
 Barbara Green & Annie Gage[®]
 Conrad Green & Brandon Weston
 Paul Green
 Stacia Green[®]
 Eliza Greenwood & Katherine Dalton
 Jamee Greer
 Melody Griggs
 Michelle Groenevelt
 Kathleen Groshong
 Lester Gruner
 Rebecca Guderian
 Neil Gunderson
 Susan & Steven Gunn
 Noa Guter
 Gol H.
 Marilyn Haberlach
 Mary & Dick Hafner

Prescott W. Hafner & William D. Glenn
 Karm Hagedorn & Sheryl Bernheine
 Tiffany Hall
 Anne Hamilton
 Casey Hamilton
 Joel & Mary Jo Hamilton
 Marion & Mark Hammer[®]
 Priscilla A. Hannon
 Ginger Hansen & Barr Quarton
 Edward Hardy[®]
 Thom Harrington & Stewart Wong[®]
 C. Nathan Harris
 Dorothy Harris & Chris Jacobson
 Rev. Barbara Harrison Condon & Larry Harrison
 Becky Harrison[®]
 Liz Harrison
 JoAnn Hartline & Melissa Barran[®]
 Tracy Hartz
 Donna Harwood
 Jeff Hashimoto[®]
 Charles Hasse
 Benjamin Hatfield
 Amy Hauschild
 Sue Hawthorne & Adel Johnson
 Glenna Hayes
 Shelley* & Lynn Hayes-MacDonald[®]
 Emily Hazen & Marian DiPerna
 Heather Heater
 Linda Heidenreich
 Katie Heil
 Elsie Heinrick[®]
 Elizabeth Joy Held

Our Donors continued

Josh Hemsath*
Nancy & James Hemsath
Lynn Henderson & Gail McKinley®
Hollis & Daniel Henry
Robyn Henry
Talitha Hernandez
Ruth & Bob Herold
Jenifer Heron
Amy Heverly
David Hewitt
Patti Higgins
Dale Hitsman
Lili Hoag
Kate Hoerster & Jeff Stelling
Krista Hofius & Lianne Koenig
Timothy Hogan®
Larry Holder®
Douglas Holley &
Christopher Nickelsen®
Sarah Holloway
James Holmes
Stacy Holmes
Lucy Homans & Hugh Bangasser
Therese Hooft
Polly & Ron Hopper®
Shannon Horst
Sheryl Horwitz & Larry Knudsen
John Hossfeld & Kirk Wells
Jim House
Jeanette Housner
JoEllen Howard®
Robert Hubenthal®
Jim Huggins
Robert Hughes & Pamela Rentz®

Claudia Hume & Tammy Byrnes®
Debra & Mary Ann Humphrey-Keever
Greg Hunicutt®
Suzanne Lile Hunter®
Cheryl Imlach & Lori Vawdrey
Jennifer & Keith Ingalls
Birgitta & Greg Ingemanson
Eric Ishino & Ronald Shiley®
Michael Ivanoff & Craig Goins
Erik Jackson & Trent Shaw
Jill Jackson & Lisa Reitzes®
Peter C. Jackson & Eric Raptosh
Nancy & Robert Jacobs®
Jennifer Jacyszyn
Katherine Janney
Erik Janson
Stephanie Jaouen & Brynn Starr
Mike Jarvis & Craig Larson®
Jennifer Jasper
Rebecca Jaynes
David Jensen & Robert Wray
Tom Jewell* & Bruce Woolverton®
James S. Jewett
Billie Johnson
David E. Johnson
Jett T. Johnson*
Dr. Kent Johnson & Cody Blomberg®
Don & Rochelle Johnson Mansfield
Caroline Johnston®
Henry Johnston & Alexander Irwin
Alex Jones
Angela Jones
Cindy & Steve Jones
Greg A. Jones



Donor Profile: Len Tritsch (1925–2015)



This year, Pride Foundation was saddened by the passing of Leonard Tritsch, a beloved member of the Northwest LGBTQ community. Len was a passionate advocate for health and athletics, serving for twenty years as a coach with the Seattle

Frontrunners, an LGBTQ running group; organizing wellness conferences; and writing books that inspired people across the country.

His devotion to health was central to his career with the University of Oregon and at the Oregon Department of Education, and later in his life when he served on the Oregon Governor's Council for Aging with a focus on strengthening services for older adults.

Len was a loyal Pride Foundation supporter, first connecting with our work more than 20 years ago. His charitable gifts have helped transform the landscape for equality throughout the Northwest. With his passing, Len left a generous estate gift to Pride Foundation, which will ensure his legacy continues to inspire the change he was a part of during his lifetime.

Our Donors continued

Misa Joo
 Maryanne & Rocky Jordan
 Karli Kristine Jorgensen[®]
 Kristin Jorgensen[®]
 Barbara & Jim Jourdonnais
 Denise Juneau
 John Jurkowski
 Jaime & Patrick Kang
 Joseph & Mary Kate Karam
 Jean Kasota[®]
 Etsuko Mary Kawaguchi
 Scott Kawasaki
 Joe Kear[®]
 Linda & Steven Keast
 R.M. Keefe & R.L. Allen
 Katie & Tom Keller
 Diane Kelley
 Glenn Kellogg
 Jess Kellogg & Craig Snyder
 Mark Kellogg
 Mary Kellogg
 Patricia Kemp & Christine Kaufmann
 Alissa Keny-Guyer
 Aidan Key & Kristin Wilson-Key
 Russell Kieffer & Thomas Pier
 Jason Kildall
 Doug Kim-Brown
 Gail King
 Joseph King
 Fran Kinkad
 Hugh Kinsellagh
 James Kirks
 Marieka Klawitter[®]
 Judith Klayman[®]

Michael Kleer[★]
 Starr & Leon Klube[®]
 Kristi Knodell & Kristin Kinnamon[®]
 John Knutson
 Rie Kobayashi
 Lisa Koluvek
 Betty Konopko
 Richard L. Koon[®]
 Laurie Kops
 Debra Koutnik
 Megan Kovacs
 Jay Krajic
 Alex & Fany Kralios[®]
 Stacie Kraly & Jeanette St. George
 Krista Kramer & Nils Peterson
 Corey Krantz[®]
 M. Junelle & Dayleen Kroontje
 Valerie Krull
 Raymond W. Lader
 Tracey Lake
 Elaine Lancaster
 Chereen & Chris Langrill
 Steven Lanzet & Jerry Jerrems
 Kathy & Tom LaPointe
 Patricia Leahy & Sandra Hubert[®]
 John Leary & Beth Cohen
 Cathy LeCompte
 Jennifer Lee
 Michelle Hope Lee
 Sarah Leeds & Luther Yost
 Keren Lehavot
 Zuzka Lehocka-Howell
 Ronald Leibsohn
 Suzanne & Howard Leichman[®]

Kim Leighton^{*}
 Margaret Lemberg[®]
 Jen Lemmer & Marty Hall
 Erin Lennon^{*}
 Larry & Donnette Lennox
 Kelly Lerner & Alli Kingfisher
 Shawn & Michael LeValley
 Sara Levin & Jeff Davis
 Adam Levine[®]
 Anne Levinson[®]
 Lawrence M. Levitan[®]
 Lana & Kenneth Levy
 Risa Morgan Lewellyn[®]
 Linda L. Lewis[®]
 Shannon Lewis
 Darrel G. Liebert
 Anne Lindberg
 Allison Lindell-Ross
 jasper Ilee
 Joseph Lock[®]
 Kenneth Locke
 Kelly Locklin[®]
 Steve Lockwood & Molly O'Reilly
 Kirstin London
 Maggie Longberry
 Roger Lorenzen & John Takami[®]
 Shawn Love
 Cassie Lovett
 Jeff Lowe & Michael O'Brien
 Rachel Lowenthal & Jennifer Rose
 Candace Lee Lower[®]
 Lauren & Joseph Lownik
 Jana Luetje
 Faith Lumsden

Fred Lund & Guy Bradick
 Robert Lux
 Corinne Lyle
 Judy Lynn
 Terrie A. Lyons
 Elaine Lyte
 Jack Quinn MacNichol
 Joanna Madden & David Ashmore
 Daniel Maddox
 Barry M. Maletzky, MD &
 Michelle Agbuya
 Raymond Malik
 Stacy Malone-Miller
 Robert Manalili
 Carolyn Mangelsdorf & Robert Grimm
 Mark Mappala
 Steve March
 Deborah Maria
 Sean Marinella
 Mimi Marinucci
 Cynthia Marquette[®]
 Susan Marshall
 Nathan Martin
 Richard Martin
 Steve Martin^{*} & Jim Smith[®]
 James Martinek
 Sean Martinez
 Lee Ann^{*} & Colleen Martinson
 Lisa J. Mason & Ann I. Welton[®]
 Paula Mataro & Chris Larson
 Marcie Mathis
 Susie^{*} & Al Matsuura
 Sharon Matthies
 Lisa Maynard[®]

Our Donors continued

Sean McBride
 Linda & Abe McCabe
 Deborah McCandless®
 Lisa McClain
 Tiffany McClain*
 Karen McClintock
 Tara & Zan McColloch-Lussier*®
 John McCrostie & Dave Navarro
 Jennifer McCullar & Sara Beth Shores
 Lillian McDonell & Carole Blakey
 Douglas McDonnal
 Taylor McDougall
 Alec McErlich
 Elizabeth McKay & Patrick McLaughlin®
 James McKendry
 John McKenna & Josh Parish
 Trish McKernan & Pat Hughes
 Anne E. McLaughlin
 Laura McMahan®
 Marilyn McMahan®
 Jude & Bob McNeil
 Tim McNichol & Anne Egan
 Kay McPherson
 Bert Mead & Steven Cook
 September Meadows
 Maryann Meersman
 Lauren Mehl & Gen Bryant
 Daniel Mehrens
 Kristine Merz
 Henry Meuret III®
 Karen Meyer & C.K. Haun
 Deborah Mikolajczyk
 Barbara Miller
 Julie Miller

Kate Miller & Jeanne Fondrie®
 Michelle Miller
 Sandra Miller
 Dennis H. Mills®
 Jennifer Mills
 David Milse & Hope Hensley
 Nicole Minkoff
 Chad Minnick & Alex Guenser
 Rachel A. Mioni®
 Peg Miskin
 C.J. Miss & Lorelea Hudson
 Christopher & Tony Mobley®
 Brianna Moler
 Ken Molsberry & Chris Vincent®
 Larry Monk®
 Jamie Montoya
 Sam Moore
 Laura Moran
 Emma Moreno* & Genevieve Aguilar+
 Susan Morgensztern®
 Barbara Moro
 Roger Morris®
 Jerry Morsbach & Emilio Cadiz
 Court Morse
 Kevin Moser & Bret Tiderman
 Estate of Jack Motteler+
 Madeline Moy
 Esther Mulnick & John Watkins
 Jill Murray
 Jered Nagel
 Vikki Nakamura
 Jeff Natter
 Jennifer Ann Nelson®
 Jeremy Nelson

Melanie & Myles Nelson
 Jack Nestor & Ron Villa
 Randy Newell®
 Jean Newman®
 Svein Newman
 Heather Nobrega
 Dave Noe
 June Noel
 Francina Noordhoek®
 Matthew Norman
 Steve Novak & Carla Stern
 Tina & Michael Novick
 Diana & Jim Noviello
 George Nunes*®
 Shellie Oakley
 Sallie Oberlin
 Amy O'Connor & Andrew Gehrke
 Cindy Ogasawara
 Judith & Charles O'Kelley
 Khris Olsen®
 Tom Oliva®
 Ken Olson
 Lindsay O'Neil
 Josh Oppenheim
 Sonny Ortiz
 Ayofemi Oseye®
 Hans & Jacquelyn* Ostrom®
 Robin K. Ota & Rob Hulslander
 Adam Ottavi Schiesl
 Jennifer Owens®
 Kerry & Connie Ozer
 Dr. Linda Pall
 Oscar & Emily Papel
 Autumn Pardee

Hazel & James Parker
 Heather Parks & Kelly Moe®
 Gary Parn
 Amy Parrish & Kevin Feris
 Alan Pate & Robert Capriccio
 Robin Patterson
 Justin Pava & Cora Anderson
 Nikki & Aaron Pava
 Janet Peacey®
 Susan Pearce
 Jamie & Eric Pedersen®
 Kirk Pederson
 Valeska Peetz
 Amy Pemberton
 Jenn Penn
 Sam Penney
 Ardella & Jim Percy
 Brent & Kim Perdue
 Elizabeth Pernotto & Robert Marshall®
 Michele Perry
 David S. Peterson
 Erika Peterson®
 Ilene Peterson & Rebecca Kirkland®
 Christopher Petrilli
 Louise Pettinato
 Maria Pettinato & Lori Cray
 Ruth Pettis
 Mimi & Dave Peugh
 Kent Pflugrath®
 Mark & Desiree Phair
 James K. Phelps & Timothy Baldwin®
 Anne Phillips & Carol Leah Brown®
 Justin Phillips
 Michael & Nancy Phillips



Advancing Legal Protections: Add the Words



Pride Foundation is an active participant in the “Add the Words” campaign in Idaho—a decade-long grassroots effort to pass a statewide bill including “sexual orientation” and “gender identity/ expression” as protected classes in the Idaho Human Rights Act.

This work led to the first-ever public hearing on the bill last January. Idaho Regional Development Organizer, Steve Martin, and several Pride Foundation volunteers

and donors testified at the hearing, in addition to supporting outreach efforts and participating in public rallies and media interviews.

Steve and Pride Foundation board member Emilie Jackson-Edney also represent Pride Foundation as part of the Add the Words Coalition—an advisory and strategizing group of like-minded organizations such as ACLU, Planned Parenthood, and Human Rights Campaign.

Together, we’re working on education and outreach to Idahoans to support the Add the Words bill, with the goal of protecting all LGBTQ residents from discrimination in housing, employment, and public accommodations.

Drew Phoenix
Paul Pierce & Joanne Fuller
Kathy Piper & Liz Beran
Denise Pitts
Timothy Popanz
Susan Povey Hutchison[®]
Tom Powers
Judith Pressmar[®]
Chris Preston
Naomi Price
Bari Prince
Margie & Larry Prince
Stacey Prince & Teri Mayo^{+®}
David Privat[®]
Jane Prucha
Janie Pulsifer
Lindsay Pulsifer & Joan Pitell[®]
William Purdy & Robb Irigon[®]
Kisa Quanbeck
Johnny Quinn & Owen Widitz
Dawn Rains
James Randall
Uma Rao^{*}
Paige Rappleye
Thomas M. Rasmussen &
Clayton W. Lewis⁺
Everett E. Reagan[®]
Grace Reamer & Kevin Boze[®]
Sue Redkey & Dan Cushing[®]
Andrea Reed
Louise Regelin[®]
Maggie Rehm & Rajal Cohen
Kathy^{*} & Robert Reim[®]
James Reith

Our Donors continued

Claire Remsberg
 John T. Reuter & Sarah Hendrick Reuter
 Martha & Scott Rhodes
 Phyllis Rhodes & Pamela Richter
 Jane Ribadeneyra & Kelly Egan
 Samantha Richert & Rick Bannerman
 Marcia Evans Rindal
 Candace Ripley
 Bruce A. Ritzen[®]
 Diane Robbins
 Mark Roberts[®]
 Muriel Roberts
 Peter Robertson
 Ryan Robinson
 Rebecca Rod & Theresa Beaver
 Julian Rodriquez
 Jeff Rogers & James Hoagland
 Charles Rohrer[®]
 Carolyn Rohrs
 Joel Roney[®]
 Maria Root
 Danni/y & Lynn Rosen
 Esta & William Rosevear
 Bev & Sig Ross
 Beth & Gib Rossing
 John Rowe & Jim Christen
 Amber Rowland
 Bryan Ruppert & David Green
 Elaine C. Ruys
 Patricia Ryan
 Ted Ryberg & Bob Williams
 Debbe Sabin
 Andrew Sachs
 Matthew Sackman

Corey Salka
 Gabi Sanchez-Stern
 Helen & Jim Sander
 Peter Sandgren & Veeti Tandon
 Lorraine Sanford
 Matthew & Hannah Sanger
 Mariko Sarafin
 Amanda Sargent & Toni Harris[®]
 Jessica Sarontay
 Anthony Sauerwein
 Cliff & Debbie Schenk
 Elaine & Paul Schieffer
 Adam Schiff[®]
 Melissa Schiff & Hopper Chu
 Jane & Norman Schlittler[®]
 Julie Schmidt & Gayle Schuh
 Mickie Schnider
 Julie Scholz
 Courtney & Garin Schrieve
 John Schroeder & Michael Tyacke
 Lisa Schuchman & Marcee Hanan[®]
 Dale Schultz
 Roberta Schur
 Norman Schwab
 Bryony Schwan
 Ryan Schwartz
 Sheryl Schwartz & Deborah Casso[®]
 Rebecca & Alexander Schwarzkopf
 Gunner Scott* & Lee Thornhill
 Jan Scott & Sally Exworthy
 Steve Scott
 Greg Scully & Frank Migaiolo⁺[®]
 Andrea Seabert[®]
 Jennifer Seaich

Ben Secord
 Linda & Mark Secord
 Michael Seiwerath
 Crystle Selden
 Linda Semanisin
 Kathy Sewell* & Deb Schenk
 Kristi Shafer
 Amanda Shannahan &
 Charley Zimmerman
 Joshua Shapel
 Emily Shapiro
 Cynthia Sharp & Lincoln Kamell
 Shelly & Dee
 Stephen Shepherd
 Carol Sherman Rogers
 Audrey Shiffman[®]
 Genya Shimkin
 Amber Shirey & Zaven Papakhian
 Audra & Bill Shropshire
 Carter Sickels
 Shelley Signett
 Ronald Silver
 Stefanie Silverman
 James Simandl[®]
 Randall Simmons[®]
 Clover Simon
 Randy Simon & Jon Meier
 Lewis Simpkins
 Corby Skinner
 Larysa Slobodian
 Javier Smith
 Marjorie L. Smith
 MaryEvelyn Smith
 Nicholas Smith[®]

Peggy Smith[®]
 Rita Smith & Linda Robinsons
 Teri Smith
 Tom Smith & Al Marks[®]
 Gregory Snider[®]
 Nathan Sobers & Michael Kuntz[®]
 Kim Sogge & Jackie Sandmeyer
 Robert Son
 Jennifer Sorensen
 Heather Sorgen
 Patrick Soricone* & W. Todd Tressler[®]
 Aubrey Hart Sparks⁺⁺[®]
 Katrina Spear[®]
 Derek Speck
 John Springer & Jay Kallio[®]
 Jeffery St. De Lore⁺[®]
 Brian Stack
 Rebecca Staffel & Eric Berg
 Melinda Stafford & Barbara Williamson
 Amy Stahl & Kevin Learned
 Kim Stansbury
 Albert F. Stansell
 Wayne & Cherie Stevens
 Pamela Stewart[®]
 Terri & Robert Stewart[®]
 Kimberli Stretch & Amy Stillman
 Lisa M. Stone[®]
 Marcie & Dave Stone
 John Stormon[®]
 Trevor Storrs & Steve Smith[®]
 Juli Stratton & Amy Echelberger
 Robert & Cynthia Strauss
 Joni & John Stright
 Kaden Sullivan & Kimberly Averett

Our Donors continued

The Rev. Karen Summers[®]
 Laura & Nick Sumner
 David Sundine[®]
 Andrew Suter-Morris
 Carolyn Swanson[®]
 Ernie & Mary Swartz
 Patrick Sweeney & Teresa Erickson
 Robert Swires & Freddy Del Rosario[®]
 Suzanne Sylliaasen & Carla Eyford[®]
 Curt Talbot
 Michel Tallichet
 Amelia Tallman
 Dan Tamsky[®]
 Carol Taniguchi
 Sue Taniguchi
 Ian Taylor
 Samuel A. Taylor
 Samuel D. Teitzel[®]
 Scott Terranella, MD, MPH
 Bob & Mimi Terwilliger[®]
 Catherine Theisen
 Schawna Thoma
 Alan Thomas
 Pamela & Brian Thomas
 Shannon Thomas
 David & Johna Thomson[®]
 Jeff & Gwen Thomson
 George Thornton & Lee Miller[®]
 Joel Thornton
 Richard Thorvilson & Phill Mroz[®]
 Paul M. Tiesse[®]
 Dan Timberlake
 D. Douglas Titus & Michael Langelier[®]
 Loki Gale Tobin

Mike Tobin
 Ashley Tollefson
 Susan A. Tomic
 Carolyn H. Tonneson
 Boo Torres & Joanne Alcantara
 Frank & Tina Torres
 Frank A. Tysver[®]
 Kai Uahanui
 Jill Underwood-Sweet
 Leroy Van Camp III
 Darci Van Duzer Heroy* &
 R. Cortlandt Heroy
 Peggy Van Kirk & Jim Reese
 Carrie Van Ness
 Birgitta & Dirk Van Zanten
 Jill Vanneman
 Corby Varness
 Peter Vennewitz[®]
 The Viehweg Family
 Dee Viereck
 Alan Virta
 Glenda Viste & Stephanie Sheppard
 Stephanie Volk
 Rich Voslow
 James & Sharon Vroman
 Donna Wade
 Ilyse & Greg Wagner[®]
 Keith Wagner & Doug Calvert
 Jody Waits* & Sean Hallock[®]
 Julie Wald
 Jennifer Waldron & Camille Mayeux
 Jessica Walker
 Dominique Walkins
 Matt Wallace & Chris Luz

Stephen Walsh
 Nevada R. Walters
 Dean Warbois
 Fred Ward[®]
 Andy Warren & Bruce Saari
 Alison Warp
 Zachary Waterman
 Elsie Watson
 Henry Waymack
 Vicki Weaver
 Cheri J. Webb[®]
 John Webster & Jim Allen
 Pam Weeks & Pamm Hanson[®]
 Priscilla Wegars
 Deva Wells & Keren Lehavot
 Heather Werckle & Ryan Dingman
 Mike Wessler
 Susan Wessman
 Jerome Whalen[®]
 Amy Wharton & Melinda Moeu[®]
 Jackie Wheatley
 Olivia White Gilman
 James & Kenneth Whitefish[®]
 Natalie Whitlock
 Tessa Whitlock
 Sara Wiener & Joanne Richter[®]
 Kaseja Wilder
 Barbara Williams & Cheryl Lepper
 Craig Williams* & Daniel McGlothlen
 Holly & Ken Williams
 Ben Wilson & Trevor Pottorff
 James Wilson IV
 Lorna Wilturner
 Gary Winchester

Paul R. Wittig[®]
 Laurie B. Wolf*[®]
 Sally & Richard Wolf[®]
 Jonathan L. Wolman
 Tammy & Steve Woodard
 David Woolsey
 Derek Woolston & Robin LaChance
 Patsy Wosepka & Shashi Karan[®]
 Hattie & William Yarwood
 Jill Yates & Heather Dodge[®]
 Kristin Young & Tracy L. Sherick
 Neola Young & tash shatz
 Jennifer Zeisig[®]
 Bette Zerba & Bonnie Burns
 Ron Zolman
 Ivana Zorica & Ryan Leighton



Fund Creators

When you establish a fund at Pride Foundation, you are making strategic decisions that will have a lasting impact on our community. Our fund creators are engaging our community in a deep and personal way by creating donor-advised, scholarship, and area-of-interest funds.

This list reflects creators of funds active during our fiscal year: **April 1, 2014 – March 31, 2015**

Anonymous (3)	Tim Franulovich	Christopher Martell & Mark Williams	Michael P. Schaefer
Lacey All	Jeff Graham & John Longres*	Heather McFarlane & Joan Christoffels	Anna Schlecht* & Sarah Vanucci
Ramon Alvarez* & Jim Jones	Steve Gunn	Sam McVeety & Jordan Goldwarg	Linda Scoccia
Associates in Behavioral Health	George M. Hampton, Jr.*	The Mental Wellness Foundation, Inc.	Greg Scully & Frank Migaiolo
Estate of Faygele ben Miriam	Gary Hollander & Paul Mandracchia♥	Jim Miersma & Bill Hammer	Seattle Men's Chorus/ Seattle Women's Chorus
Cheryl Beighle & Steve Schroeder	John Holliday & Glenn Lawler	Emma Moreno* & Genevieve Aguilar	Tom Semper & Ray Calabro
Phoenix Benner	Inland Northwest Business Alliance	Doug Morgenson	Julie Shapiro & Shelly F. Cohen
Nathaniel Brown	Outreach	Layne Mortensen & Rick Griswold	Stephen Silha & Gordon Barnett
In memory of Lee S. Burke	Alex Jacks	Karen Mudd* & Monica de Baca	Sojourner Truth Ministries
Anne Xuan Clark	Mary Jacobsen & Joy Wood	Northwest Development Officers Association	Gary Southerton & David Isla
Scott Clyde	Carol Kerley & Linda Dunham	Steve Parsons	Aubrey Hart Sparks*
Geraldine V. Cole*	Kevin J. Mossier Foundation	Marschel Paul*	William Teska
Kim Collier	Michael Kleer*	PFLAG Bellevue	J. Thompson & J. Wittrock
John Dagres & Jack Odell	Patty Knight*	Laura Pierce*	True North Land Surveying, Inc.
Sheri Day	Kristin Kucera	Timothy Popanz	Nicholas Utzinger & John Rochford
TDiane Day	Jonathon Lack*	Stacey Prince & Teri Mayo	Janice Van Cleve
Helen Dehner	Tom Land	Rainbow City Band	Friends of Patricia Van Kirk
The Derivative Duo	Martin Lantz & Donald Coffman♥	Thomas M. Rasmussen & Clayton W. Lewis	Benjamin G. Vasquez
Peggy Dolane*	Rebecca Laszlo & Sara Intriligator	Scott & Katie Renschler	Kathryn Wehle* & Theresa Haynie
William S. Etnyre	Daniel C. Lee	Robert A. Riopelle	Estate of Ric Weiland*
Bob Evans* & Steve Davis	Paul Lenehan & Jonathan Warn	Chet Robachinski & Jerry Slipman	Whidbey Giving Circle
William L. Fleming*	Howard Leonard	Robert Roblee & Ron Johnson	Beverly Wozumi♥
Doug Frank	Daniel Ling & Lee Obrzut	Clay Sales	



Visionaries

Our family of more than 250 Visionaries—people who have included Pride Foundation in their estate plans—are a community of generous people who want to leave a legacy of compassion and care, and who believe that all LGBTQ youth, adults, and families deserve to live safely, openly, and genuinely.

Anonymous (15)
Bruce M. Abrams
Joyce M. Allen* & Jessica Lynn
Carrie Amankwah
Raymond Araujo*
Catherine Bachy* & Margaret Giffels
Barbara Bailey*
Thatcher Bailey*
Jolly Sue Baker* & Clare Hannan
Ted Bash
Becky* & Mary Jo Bauen
Ward Beattie
Paul Beaudet* & David Wertheimer*
Kate Beck
Allison Beezer*
Christopher Beiter
Phoenix Benner
John Berg & Robert Roth
Stephen R. Blair♥
Peter Boeschstein
Marsha Botzer*
James Braden
Jo Brodahl*
Zoey Brodsky*
Hal Browning & Robert Kipp
Robert Bruneau

John Burlison
William Burnett♥
Amy Capolupo
Daniel Caracciolo & Donna MacKenzie
Cat Carrel
Robert Carroll & Daniel Yarger
Martin Casey & Brian Cole
Donald P. Chamberlain
Leslie Christian & Heather Andersen
Daniel Christopher
Sam Ciapanna & Dean Williamson
Anne Xuan Clark
Ted Clark & Eugene Otto
Vernon Clark-Robbins♥
Grover Cleveland*
Bryan Cline*
Thomas Connell
Caitlin Copple*
Richard Warren Cornwell♥
Candy Cox
Steve Crandall & Brian Hawksford
Debra Crespín
Gary Crevling
Robert Cundall* & Dan Bross
Michael Dameron & Thomas Marocchini
James Darkow

Char Davies
Joel C. Davis
Russell W. Davis♥
Brian M. Day♥
Karl A. Derrick
Tom Diehm & Tom Davis
Clyde G. Diemer
Bob Ding
Tom Dixon
Peggy Dolane*
Nancy A. Drigotas
John Dunn
Bob Eichler
Sara Elward*
Charlotte Escott
Akili Estrella*
William S. Etnyre
Bob Evans* & Steve Davis
Douglas Exworthy* & Kent Poush
Jean Ferries & Lyn Moore
Elaine Field
William L. Fleming*
Ward Folsom & Leigh Champlin
Glenn Fox
Norm Frampton & Ed Hunziker♥
Sue Frantz & Verla Viera

Tim Franulovich
John French & Craig Norton
Eva Frey
Jason J. Fussell* & Robert Heuer
Marie Helene Gagnon*
Leslie Giblett
Michel Girard*
Barbara Grant
Michael Grochau
Paul J. Grube, Jr.
Teresa Guajardo & Tina Roose
Steve Gunn
Audrey Haberman* & Marge McGinty
Matthew Haggerty
George M. Hampton, Jr.*
Roy A. Hamrick
Migee Han*
Darrell S. Harris
JoAnn Hartline & Melissa Barran
Michele & David Hasson
David Owen Hastings
Shelley Hayes-MacDonald*
Jeff Hedgepeth* & John Medlin
Nicholas Heer
John Arthur Herrin**♥
Elizabeth Hester

Visionaries continued

Peter D. Hiatt
 Rex Himes
 Bill Hodge
 Gary Hollander & Paul Mandracchia♥
 Douglas Holley
 John Holliday & Glenn Lawler
 C. David Hopkins*
 Roy L. Hughes
 Katie Hultquist & Laura Cox
 Greg Hunicutt
 Christine Hurley
 Peter C. Jackson
 Walter Jelonek
 Dan Jester♥
 Tom Jewell* & Bruce Woolverton
 Shehreen Johnson*
 Christopher C. Jones
 Jerry Jordheim
 Katelen Kellogg*
 Carol Kerley & Linda Dunham
 David Kerlick
 David Kersey
 Christopher Keyser & Steven Castele
 Ana Maria King
 Daryl J. King & Todd G. Hagen
 John King
 Duane Kitna & Bryon M. Stargel
 Thomas Kleber♥
 Michael Kleer*
 Jim Klemett♥
 Patty Knight*
 Keiko Koizumi*
 Greg Kucera & Larry Yocom
 Annette Laico*
 Jason Lamb & Alan Kristal
 Bill Lambert♥
 Kimberly Langford♥
 Gary Lanksbury♥

Martin Lantz
 James Lasersohn
 Danette K. Leonhardi*
 Kelly Lerner
 Mark Levine & John Keppeler
 Lawrence M. Levitan
 John Longres*
 Ted Lord* & Chris Cooper
 Don Lothian♥ & Harvey Muggy♥
 Lonnie Lusardo
 Robert Lux
 Pat Mail & Peggy Kopf♥
 Deborah McCandless
 Dale McCurdy & Mark den Hartog
 Trish McKernan & Pat Hughes
 Marshall McReal
 Marla M. Meislin*
 David C. Mendoza
 Ed Miesen* & Glenn Yorita
 Barbara Monda
 Tami Moore* & Cathy Green
 Don Moreland♥
 Marsha A. Morgan & Claire S. Moore
 Doug Morgenson
 Jack Motteler♥
 Tom Musial
 Susan Nivert
 William & Ramona Nourse♥
 George Nunes*
 Reeva M. Ohms
 Jennifer Olson
 Silas O'Quinn & Nathan Smith
 William Orley & Max Silver
 Mike Orlich
 Sean Oslin
 Hans & Jacqueline* Ostrom
 Douglas D. Owens♥
 Tom Page

Anthony Papini*
 Marschel Paul* & Margaret Sutro
 Alex Pava & Clif Marr
 Douglas Peckham
 Lucy Peckham
 Travis Penn & John Wicher
 Joseph E. Pentheroudakis
 Rick Peterson
 James K. Phelps & Timothy Baldwin
 Stephen Phillips
 Janice Pickard & Anne Harvey
 Donald R. Pickens
 Gregory Ploub♥
 Tina Podlodowski*
 W. David Poot*♥
 Marjorie Press*
 Janie Pulsifer
 Everett E. Reagan
 Kathy* & Robert Reim
 Shad Reinstein & Jody Laine*
 Tim Rice
 Robert A. Riopelle
 Greg Robbins
 Eric Robison
 Robert Roblee & Ron Johnson
 Clay Sales
 Michael P. Schaefer
 Robert E. Scheidler
 Fred Schoen*
 Lynn G. Schrader♥
 Norman Schwab
 Greg Scully & Frank Migaiolo
 Michael & David Serkin-Poole
 Peter Shalit & Bob Clark
 Julie Shapiro & Shelly Cohen
 Michael Shiosaki* & Ed Murray
 Brian Silkworth & William Colter
 Howard Silverman & Michael J. Lehman

John Skelton
 Paul Slane♥
 Tom Smith
 Aubrey Hart Sparks*
 Cap J. Sparling
 Eric Spivack
 Arlis Stewart*
 Lisa M. Stone
 Gayle Stringer & Nancy Nickelson
 John Templeton
 William R. Teska
 H. William Thieleman
 J. Thompson & J. Wittrock
 Donald H. Thorgrimson♥
 Justin Thumler & Raymond Houle
 Rene Tillman
 Peggy Torner
 John Trautman
 Len Tritsch♥
 Janice Van Cleve
 Ken Van Dyke
 Zane T. Van Kirk
 Rich Vasquez♥
 Alan Waddell & Paul Otto
 Wakefield*
 Ben Waldman
 Jim Warford♥
 Jack Weber & Craig Hills♥
 Melanie Wilhoite*
 Laurie B. Wolf*
 Rita Wood
 David Woosley
 Mary Kay Wright*
 Rose Young
 Ria Zazycki*



Volunteers

We would not be where we are today as an organization without the support of our dynamic team of volunteers. Pride Foundation volunteers come from every corner of the Northwest, bringing with them their expertise, talent, and passion for equality.

This list reflects volunteer contributions from our fiscal year: **April 1, 2014 – March 31, 2015**

Anonymous (1)	Jeralyn Berg Miller	Nicole Browning*	Sue Clauson	Donna DiFiore	Curt Freed
Kelly Abner	Jason Bergevin	Gail Bruner	Allison Cleveland	Anna Doran	Tom Freeman
Anastasia R. Aldecoa	Nicole Bernard	Laura Bry♥	Harriett Cody	John Doran	Stephen Fritts
Rachel All	Dani Bernstein	Ingrid Buchan	Joel Combs	Jonathan Downing	Jana Fry
Bruce Allen	Terry Bible	Marilyn Buckner	Chris Cooke	Kimberly Early	Nick Fuchs
Ramon Alvarez*	David Bird	Natasha Burrowes	Nikki Coyote	Forrest Eastham	Ginny Furshong
Jim Ambrose	Wendy Biss	Angie Buysse	Cheryl Cristello	Betsy Elwood	Jason Fussell*
Jane Appling	John K. Blake	Kaci Campbell	Amy Cromer	Anders Enochs	Laurie Gallagher
Jane Arends	Marlena Blonsky	Schylar Canfield-Baber	Sara Crozet-Robin	Maddie Ettlin	Amy Galvan
Adam Arlint	Alaina Blyth	Kara Carlson	Robert Cundall*	Bob Evans*	T. Luis Galvan
Carmel Aronson	Robin Boehler*	Tylene Carnell*	Nicole Cundiff*	Lynn H. Everson	Laura Gentry
Thomas Azzarella	Dana Bonifacio-Sample	Cat Carrel	Amanda Cundiff-Meyer	Douglas Exworthy*	Nancy Glaser
Ben Bakkenta*	Karter Booher	Danielle Carver	Christina Davis	Debbie Feis	Tonei Glavinic
Jen Balkus	Karen Borell	Jim Cash	Roger Davis	Kate Flaming	John Goffney
Hillary Bard	Jeff Boudreau	Rachel Cash	Sera Day	Tessa Fleming	Kris Gonzalez
Michael Barnes	Gorham Bowler	Steven Castele	Sheri Day	William L. Fleming*	Ashlei Goodman
Ronni Batchelor	Kelsey Branca	Christine Chaney	TDiane Day	Corey Fortune	Glenn Govin
Matt Baume	Timm Briggs	Lee-Ling Chen	Anita K. deGive	Boyd Foster	Elliat Marie Graney-Saucke
Whitney Bausch	Kathleen Brooking	David Chow	Helen Dehner	Larry Fox	Nicole Gratch
Bart Bell	Heather Broome	Jessica Chow	Cyril Delgado	Alanna Francis	Erin Gray
Phoenix Benner	Anne Browning	Daniel Christopher	James DeLong	Christine Franklin	David Green
James Benzschawel	Danae Browning	Cynthia Chu	Terry Diaddigo	Jessica Frederick	Paul Green

Volunteers continued

Vickie Green	Curtis Jefferson	Jeff Lowe	Stacy Miller	Elizabeth Patrick	Michael P. Schaefer
Geoff Greenlee, DDS, MSD	Jean Jeffries	Monica Lundberg	Samuel Mitchell	Jason Patterson	Debbie Schenk
Nik Griffith	Tabitha Jensen	Mike Madden	Christopher Mobley	Marschel Paul*	Fred Schoen*
Eli Grossman	Billie Johnson	Tammy Majeski	Tony Mobley	Justin Pava	Julie Scholz
Lucy Groves	Monty Johnson	Devin Majkut	Melinda Moeur	Brett Perry	Roberta Schur
Rebecca Guthrie	Jim Jones	Barry M. Maletzky, M.D.	Peter Molof	Jeanne Perry	Ryan Schwartz
Efrain Gutierrez	Ron Jones	Jennifer Mannix	Dennis Montgomery	Christopher Petrilli	Jeremy Scott
Brennon Ham	Larry Kairaiuak	Mark Mappala	Heidi Montoya	JT Phillips	Mike Scott*
Jake Hamburg	Mudit Kakar	Sean Marinella	Linda Morgan	Brandy Pirtle-Guiney*	Erick Seelbach
Bridget Hanna	Natalia Kay O'Brien	Cara Marks	Erin Morotti	Bridget T. Potter	Acton Seibel
David Hare	Beau Kellogg	Jeffrey Marman	Anna Morris	Marjorie Press*	Luis O. Serrano Figueroa
JoAnn Hartline	Brett Keogh	Jaimee Marsh	Court Morse	Zachary Pullin	Kathy Sewell*
Christopher Haworth	Kim Keparutis	Lee Ann Martinson*	Greg Mullins*	Lindsay Pulsifer	Jules Shindel
Shelley Hayes-MacDonald*	David Kerlick	Christina Marx	John Mundy	Rick Ramos	Deb Slattery
Jeffrey Hedgepeth*	Jason Kildall	Karissa Masciel	Vikki Nakamura	Paige Rappleyle	Beka Smith
Jay Heiny	Seth Kirby*	Paula Matano	Jeff Natter	Shawn Reagor	Drew Smith
Luis Hernandez	Aysha Kloub	Susie Matsuura*	Jan Nelson	Kathy Reim*	Gregory Smith*
Karen Heroy	Megan Knight	Camille Mayeux	Kirsten Nelson	Thomas Retan	Tara Smith*
Elizabeth Hester	Kirk Koenig	Monique McClure	Kyndra Nevin	John Reuter	Tom Smith
Robert Heuer	Laurie Kops	Kimberley McCollim	Daneil Newcomb	Kat Reuter	Sarah Smith-Benanti
David Hlebain	Corey Krantz	Anders McConachie	Kerry Norman	Samantha Richert	Kim Sogge
Tuyen Hoang	Jonathon Lack*	Al McCoy	Steve Norris	Kory Riley	Nathan Sorseth
Katy Hogan	Tracey Lake	Eric McDermott	Craig Norton	Ramon Rinonos-Diaz	Jeffery St. De Lore*
Ariel Holcomb-Hockin	Cris Land	Daniel C. McGlothlen	Shawn Nowlin	Sunny Rivera	Grace Stalling
Mavrick Homer	Aric Lane	Sarah McGlothlen	Joe Nuber	Jan Roark	Jacob Stalnaker
Jim Huggins	Jennifer Larsen	Brian McKenna	Melissa Nussbaum	Laura Robins-Morris	Heidi Adielia Stanton
Jason Hunke*	Craig Larson	Elwood McLoud	Tim O'Connor	Christopher Rogers	Kevin Stark
Rock Hushka	Rebecca Laszlo	Beth McNamara	Christie Oar	Elias Rojas*	Selina Starno
Doug Ingraham	Cathy LeCompte	John Medlin	Joleen Oerman	Donna Rosman	James Steele, Jr.
Susan Inman	Michael Lee	Lauren Mehl	Wilena Old Person	Laura Rowlett	Al Steuart
Sara Intriligator	Victoria Lee	Jude Mercer	Gary Olivieri	Mark Ruffo	Bob Stevenson
Alex Irwin	Sarah Leeds	Philip Mervin	Josh Oppenheim	Bryan Ruppert	Juli Stratton
Linda Isenson	Steven Leider	Nathaniel Meskel	Adam Ottavi Schiesl	Andrew Sachs	Miranda Strey
Erik Jackson	Erin Lennon*	Drew Michael	Justin Pabalate	Paul Safstrom	Lynn Stromski
Emilie Jackson-Edney*	Shar Lichty	Bert Miller	Dawn Parker	Jeff Sakuma*	David Strong*
Michael Jarvis	Keri Lobdell	David Miller	Kay Parsons	Alissa Salmore	Ian Sullivan
David Jayo	Kirstin London	Donna Miller	Alex Paterson	Stefia Sato	David Sundine

Volunteers continued

Margaret Sutro	Melinda Williams
William Teska	Barbara Williamson
H. William Thieleman	Jean-Paul Willynck*
Mike Thomas	Edbera Wilson
Stephanie Thomas Bell	janelle wilson
Eran Thompson	Marci Wing
David Thorpe, CPA*	Brian Wolf
Tom Tiberio	Richard Woo
Chris Topping	Rose Wood
Boo Torres	Mary Kay Wright*
Vicky Tovar	Tim Wright
Mike Travis	Zachary Wright*
Jessica Trupin	Neola Young
Maria Turner-Carney	Anton Zanotto
Rachel B. Valdez*	Christine Zumwalt
Leroy Van Camp III	
Darci Van Duzer Heroy*	
Greg Van Leuven	
Benjamin G. Vazquez	
David Victor	
Jackie Vindigni	
Bryce Vradenburg	
Donna Wade	
Ilyse Wagner	
Keith Wagner	
Wakefield*	
Kayle Walls	
Adam Warren	
Erica Wasmund	
Zack Waterman	
Joan Wattles	
Michelle Weaver	
Kathy Wehle*	
Heather Werckle	
Lynne Weynand	
Betsy White	
Cyndi Wilder	



Organizational Support

Pride Foundation is honored to receive support and matching gifts from more than 100 leading corporations, employee groups, and partnering nonprofit groups and foundations.

This list reflects donations from our fiscal year: **April 1, 2014 – March 31, 2015**

1st Security Bank

ADAM Queer Youth Initiative

Adidas America, Inc.

Amazon.com

Amgen Foundation

Arcus Foundation

Aria Foundation

Associates In Behavioral Health

Bank of America

Beaulieu Vineyards

Bee Good Marketing

Beighle Family Foundation⁺

Benevity

Bill & Melinda Gates Foundation[®]

Boeing Employees Credit Union

Cairncross & Hempelmann, PS

Calvert Foundation

Capitol Cider

City of Seattle Combined Charities

Coalition for Charitable Choice

Combined Federal Campaign of South Puget Sound

Combined Federal Campaign of Western Montana

Comcast

Commonweal Foundation

Crooked Fence Brewing

EMP Museum

Employee's Community Fund of the Boeing Company

EqualityCard

Evelyn & Walter Haas, Jr. Fund

Fidelity Charitable Gift Fund[®]

The Foraker Group

Fremont Brewing Company

Funders for LGBTQ Issues

GE Foundation

Gill Foundation

Girly Press

Give!Guide

Glassybaby

Global Impact[®]

Google Inc.

Nate Gowdy Photography

Great Falls Area Combined Federal Campaign

Greater Olympic Peninsula Combined
Federal Campaign

Hilliard's Beer

Horizons Foundation

IBM Employee Charitable Contribution Campaign

Idaho Women's Charitable Foundation

Inland Northwest Business Alliance Outreach⁺

Jackson Family Wines

Jewish Community Endowment Fund

JustGive

Kevin J. Mossier Foundation⁺

KeyBank Foundation

King County Combined Federal Campaign[®]

Landsman & Fleming LLP

Levi Strauss Foundation

Loeb Family Foundation

METRO/King County Employee Charitable Campaign[®]

Microsoft Employee Giving Campaign[®]

Microsoft Corporation[®]

Mile High United Way

Mountain Monkey Business

Myoptic Optometry

Network For Good

Oak Creek Foundation

Orange Square

Pagliacci

Paladino & Company Inc.

Organizational Support continued

PFLAG Bellevue⁺®

Port of Seattle Employee Charitable Campaign®

The Prudential Foundation

Rainbow City Band⁺

Razoo Foundation

Satterberg Foundation

School of Rock Portland

Schwab Charitable Fund

Seattle Foundation®

Seattle Men's Chorus/Seattle Women's Chorus⁺

Seattle Theatre Group

Shalom United Church of Christ

Silicon Valley Community Foundation

Sojourner Truth Ministries⁺

Solid Ground

State of Washington Combined Fund Drive®

Symetra

TRF Pacific, LLC

Union Bank Foundation

United Way of Anchorage

United Way of King County®

United Way Silicon Valley®

United Way of Snohomish County®

United Way of Spokane County®

United Way of the Columbia-Willamette®

United Way of Tri-State

United Way of Whatcom County

University of Alaska Southeast GSA

University of Washington Alumni Association

Vancouver Heights United Methodist Church

Vanguard Charitable Endowment Program

WA State Mr/Ms Leather Organization⁺®

Walden Asset Management

Washington United Advocacy Fund⁺

Well Balanced

Wells Fargo®

Wells Fargo Advisors - Boise

Wimmer Solutions

Wine World & Spirits

WizeHive

Woodland Park Zoo

Wright Law PLLC®

Yakima Kittitas Combined Federal Campaign


Your Man Friday®



Scholars

Pride Foundation's impressive list of scholars are current and emerging leaders in the LGBTQ and straight ally community. Scholars play an important role in deepening understanding of LGBTQ issues, supporting our community, and advocating for cultural change. They are the face of our future.

Lina Ali	Javier Clawson	Mykal Green	Ane Mathieson	Steven Sawyer
Branden Ambert	Elmer Coria-Islas	Siche Green-Mitchell	Jeannie Mayotte-Davies	Xavier Shepler
Cohen Anaya	Maria Crouch	Cierra Gromoff	LaMar McBride	Jackson Shultz
Chelsea Anderson	Michael Daellenbach	Nora Herzog	Eli Michael	Alyx Steadman
Mick Arieta	Shivaunne Davis	Shelley Higman	Morgan Michels	Angela Tang
Trina Banks	Kolby Deagle	Kevin Holden	Jessica Milford	Steven Tang
Heni Barnes	Daniel DeGeare	Makayla Hordyk	Adrianna Mills	Mumtaz Teeters
Olivia Barrell	Jamie Des Enfants	Mary Hyder	Yasu Nakasato	Bradlee Thielen
Joanna Bautista	Manu Diaz-Ordaz	Katy Imbrone	Thomas Nguyen	Melissa Vera
Oscar/Veronica Beltran	Vi Duong	Rachel Jackson	Day Olver	Jeff Verlanic
Lexi Bergeron	Deserae Duran	Tascha Johnson	Marty Ortiz	Dalton Warr
Isaiah Bertagnolli	Melissa Ebben	Lane Kaiser	Victoria Pacho	Meghann Wiedl
Karama Blackhorn	Tito Eillis	Cole Ketcherside	Rafael Alejandro Padilla	Caden Williams
Luke Boone	Oliver Fauria	Michelle Knerr	Landyn Pan	Hannah Wilson
Homer Bozarth	David Ferguson	Peter Kohring	Alex Perez-Perez	Jean Withers
Ryan Branson	Chandrika Francis	Chantelle Korver	Dianne Piggott	Tiffany Woelfel
Candice Brings Plenty	Reed Garber-Pearson	Teddy Laboy	Alyssa Quintyne	Aster Wolfe
Alik Brundrett	Rigoberto Garcia	Luke Laughlin	Colby Rezayat	Shain Wright
Anne Bryson Doyle	Kale Gardner	Blaine Leal	Reilly Richards	Laura Yanez
Jasmin Carmona	Andrew Geske	Tyler Leogrande	Summer Richardson	Hector Zaragoza
Stefan Cavin	Hillary Gleason	Rafael/a Luna-Pizano	Ari Robbins	Ruben Zecena
Audrey Chavarria Calderon	Kelly Grace	ToniAnne Machala	Wes Robinson	William Zogg
Shaun Christean	Luke Grayson	Jose Madrid Beltran	Niko Rojas	



Be who you are,
where you are...

Washington



Financials

Statement of Financial Position

Year Ending March 31, 2015

Assets

Cash & Cash Equivalents	705,213
Investment Portfolio	26,745,852
Donor Designated Portfolio	9,239,649
Trusts	1,294,709
Property & Equipment, Net	21,784
Promises To Give	73,047
Other Assets	55,074

Total Assets: **\$38,135,328**

Liabilities & Net Assets

Accounts Payable	53,755
Grants & Scholarships Payable	274,072
Funds Held For Others	9,239,649
Other Liabilities	29,685
Net Assets:	
Unrestricted	4,275
Temporarily Restricted	3,928,106
Permanently Restricted	24,605,786

Total Liabilities & Net Assets: **\$38,135,328**

Statement of Operations

Year Ending March 31, 2015

Revenue

Individual Contributions	881,624
Workplace Contributions	59,410
Corporate/Foundation	450,151
Bequests	0
Other	165,313

Total Revenue: **\$1,556,498**

Expenses

Scholarships	366,251
Fellowships	32,000
Grants	819,845
Regional Leadership Development	1,229,636
Fundraising	319,268
Management & General	199,169

Total Expenses: **\$2,966,169**

Net Surplus (Shortfall)

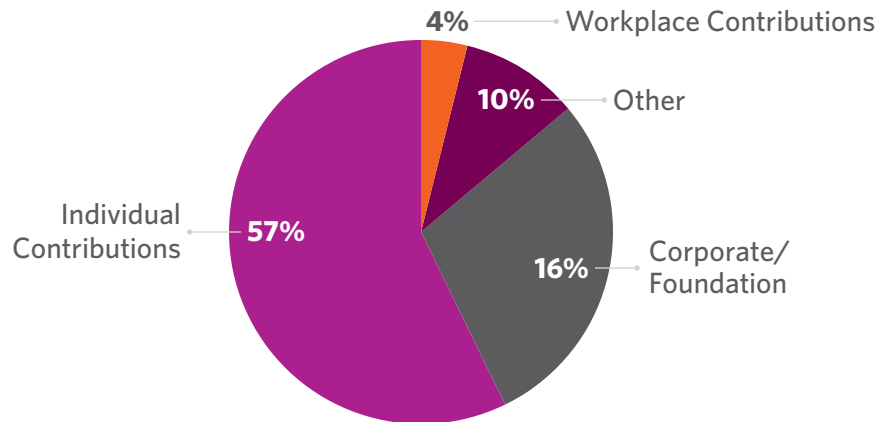
Before gains & losses	(1,409,671)
Net Investment Activity	1,697,223

Net Surplus (Shortfall): **\$287,552**

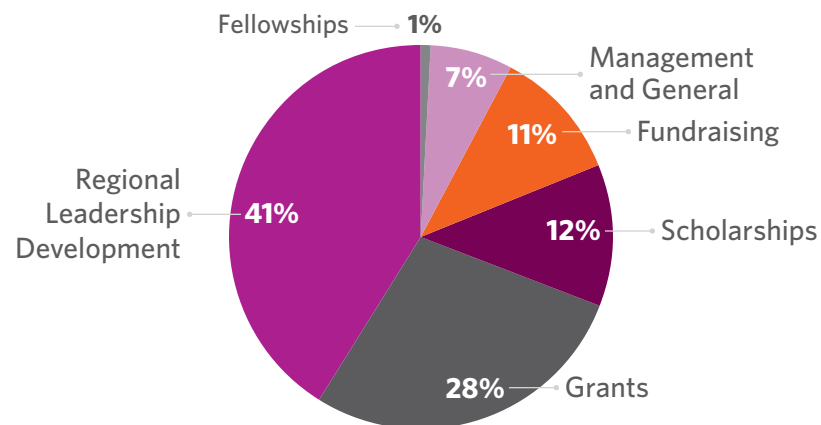


Staff & Board

Revenue



Expenses



Staff

Alli Auldridge
Director of Community Engagement

Zoey Brodsky
Database Administrator

Katie Carter
*Regional Development Organizer
Oregon*

Rachael DeCruz
Communications Manager

Farand Gunnels
*Regional Development Organizer
Washington*

Josh Hemsath
*Regional Development Organizer
Alaska*

Kris Hermanns
Executive Director

Katelen Kellogg
Community Engagement Manager

Kim Leighton
*Regional Development Organizer
Montana*

Steve Martin
*Regional Development Organizer
Idaho*

Gunner Scott
Director of Programs

Dennis Thomas
Administrative Assistant

Craig Williams
Educational Programs Officer

Jimbo Worm
Director of Finance and Operations

Board of Directors

Ben Bakkenta

Nicole Browning

Tylene Carnell

Nicole Cundiff

Bob Evans

Doug Exworthy

Jason Fussell

Shelley Hayes

Emilie Jackson-Edney

Seth Kirby

Jonathon Lack

Lee Ann Martinson

Susie Matsuura

Greg Mullins

Brandy Pirtle-Guiney

Elias Rojas

Jeff Sakuma

Kathy Sewell

D. Gregory Smith

Tara Smith

Wakefield

Jean-Paul Willynck



Pride
Foundation

2014 E. Madison Street, Suite 300
Seattle, Washington 98122

206.323.3318 | 800.735.7287

info@pridefoundation.org | pridefoundation.org



PrideFoundation



PrideFdn

Our Mission

Pride Foundation inspires giving to expand opportunities and advance full equality for LGBTQ people across the Northwest.

Our Vision

We envision a world in which all LGBTQ youth, adults, and families enjoy the freedom to live safely, openly, and genuinely.